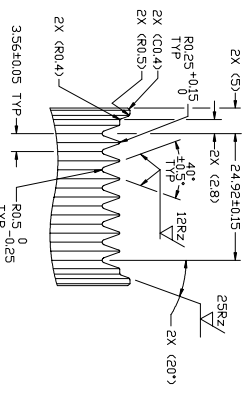
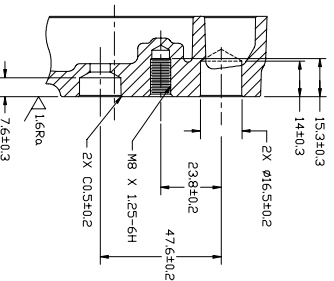


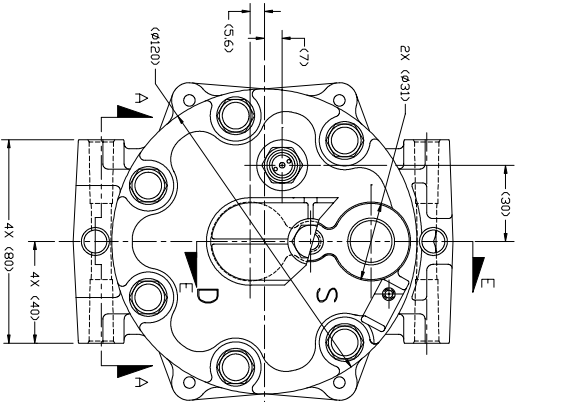
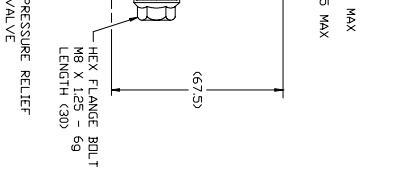
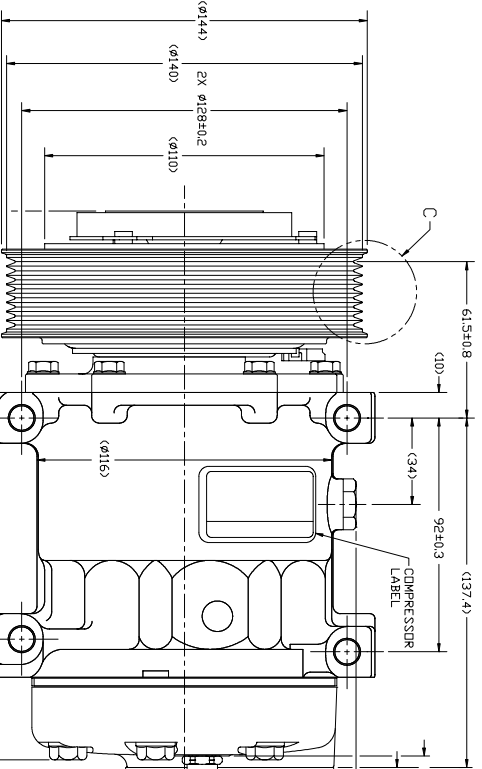
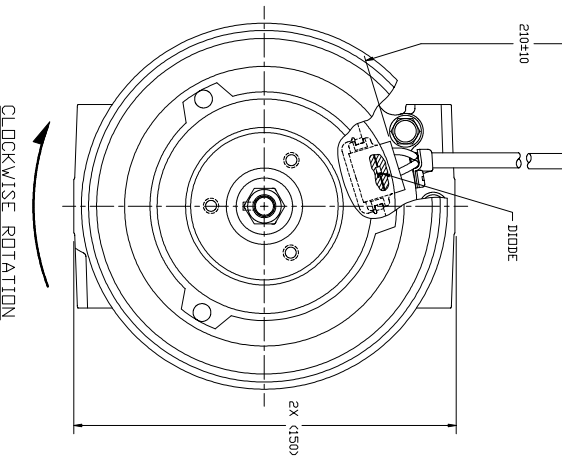
CIRCUIT DIAGRAM  
(FOR REFERENCE)



DETAIL C  
SCALE 2:1



SECTION E-E  
(SECTION WITH SHIPPING PAD ASSEMBLY AND BOLT REMOVED)



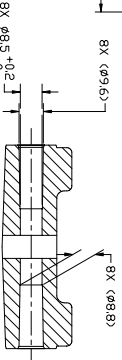
COMPRESSOR SPECIFICATIONS (REF.)

DISPLACEMENT PER REVOLUTION	154.9 cc / rev. (9.5scuh / rev.)
MAXIMUM ALLOWABLE RPM	3000 R.P.M.
MAXIMUM ALLOWABLE CONTINUOUS RPM	2000 R.P.M.
REFRIGERANT	R134a
DIL (S.F.-15)	300 cc (10.1 fl.oz.)

CLUTCH SPECIFICATIONS (REF.)

RATED VOLTAGE	DC 12V
BRAKING TORQUE	3.2 kgf·m min. @ 12V
MINIMUM ENGAGEMENT VOLTAGE	7.5V @ AIR GAP 0.8mm
POWER CONSUMPTION	4.9 watts max.
BELT TYPE	FV8 TYPE
MAXIMUM ALLOWABLE BELT TENSION	120 kgf
BULLET DIAMETER	Ø140 mm (5.51 in.)
CLUTCH TYPE	SUPER HEAVY DUTY

SECTION A-A



REV	DATE	DESCRIPTION	CHK	APPV
1		INITIAL RELEASE Dwg 4082-6000		
2		REVISIONS		
3		DATE		

DATE	1/23/08	DRW NO.	4082-6000
REV	1	SCALE	1:1

**SANDEN**  
INTERNATIONAL, U.S.A., INC.  
11111 METRIC

THIS DRAWING AND THE INFORMATION CONTAINED THEREON ARE THE PROPERTY OF SANDEN INTERNATIONAL, U.S.A., INC. AND ARE TO BE USED ONLY FOR THE PURPOSES SPECIFIED HEREON. NO PART OF THIS DRAWING IS TO BE REPRODUCED OR TRANSMITTED IN ANY FORM OR BY ANY MEANS, ELECTRONIC OR MECHANICAL, INCLUDING PHOTOCOPYING, RECORDING, OR BY ANY INFORMATION STORAGE AND RETRIEVAL SYSTEM, WITHOUT THE WRITTEN PERMISSION OF SANDEN INTERNATIONAL, U.S.A., INC.

INTERSECTION OF 1:1 AND 2:1  
1:1  
2:1

TEMP. AND PRESSURE INDICATION

COMPRESSOR