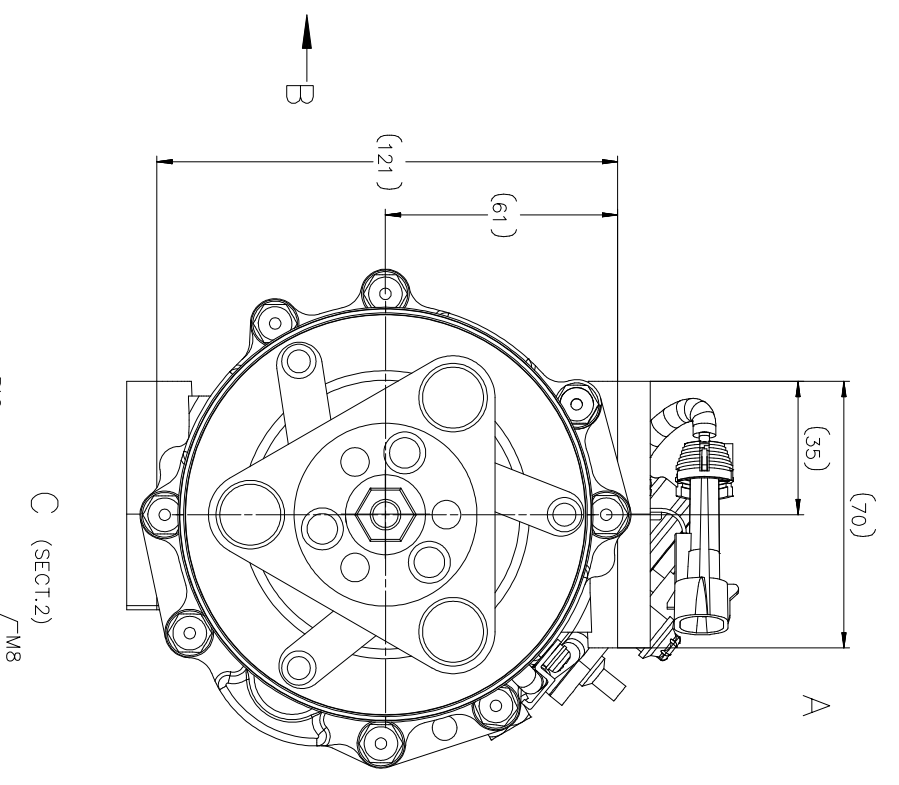
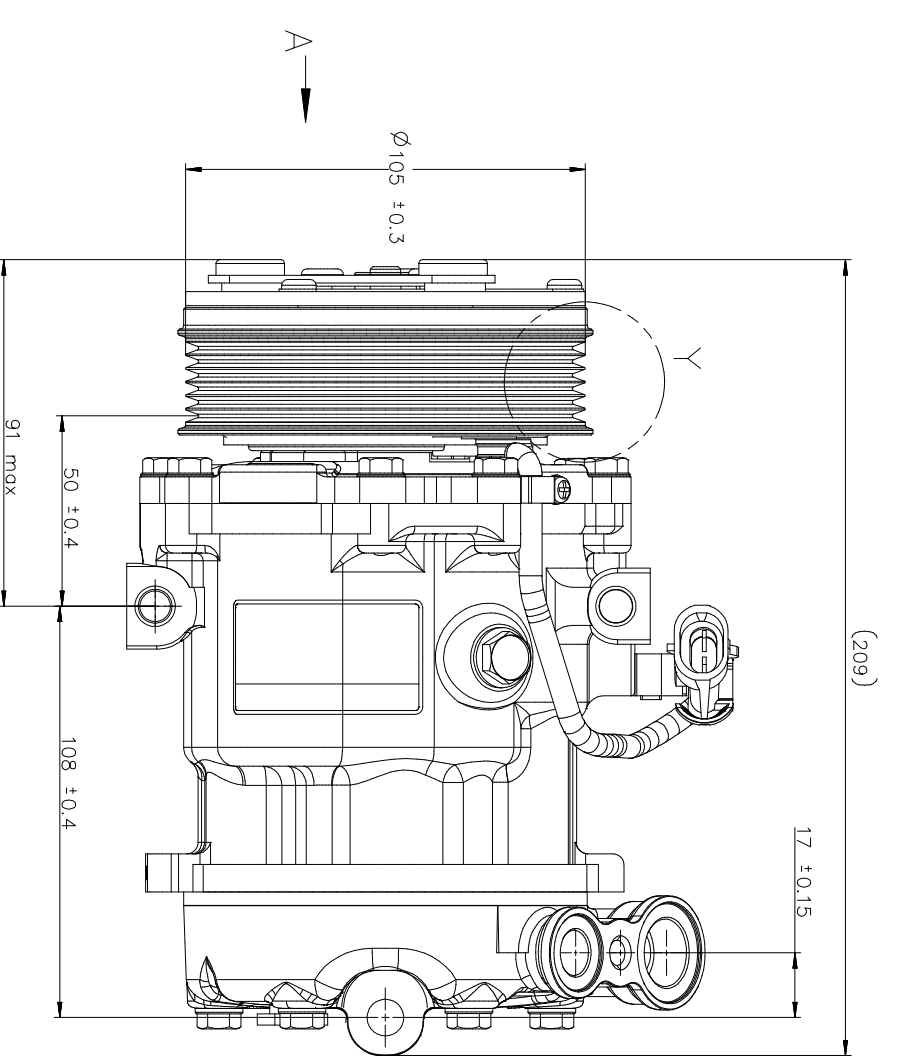
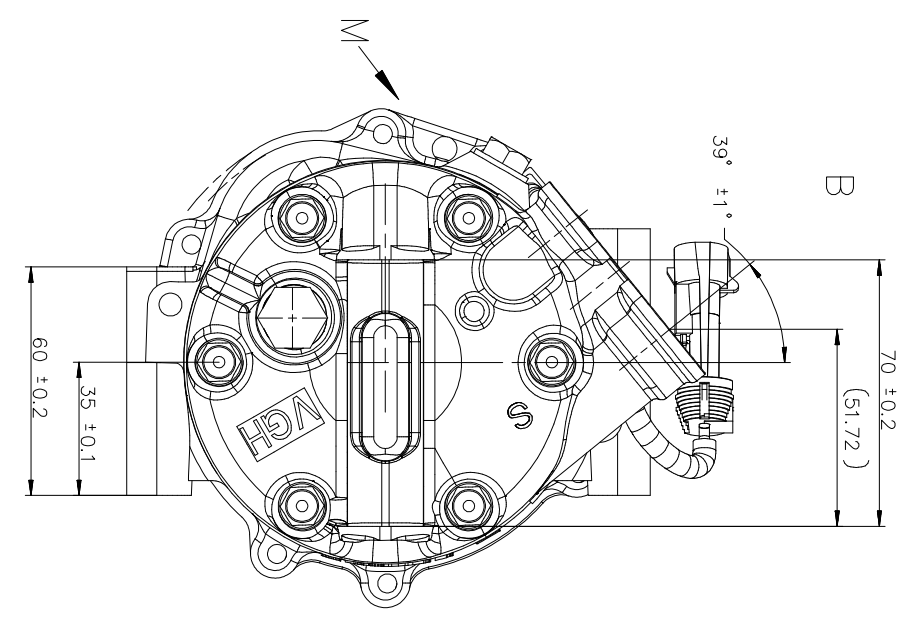
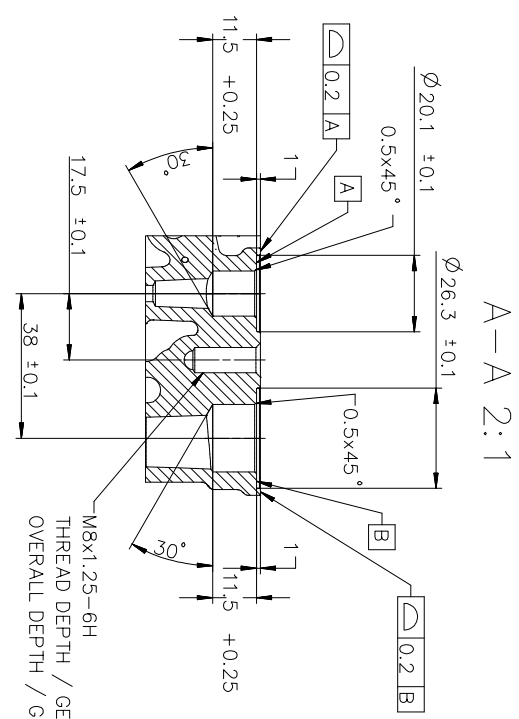
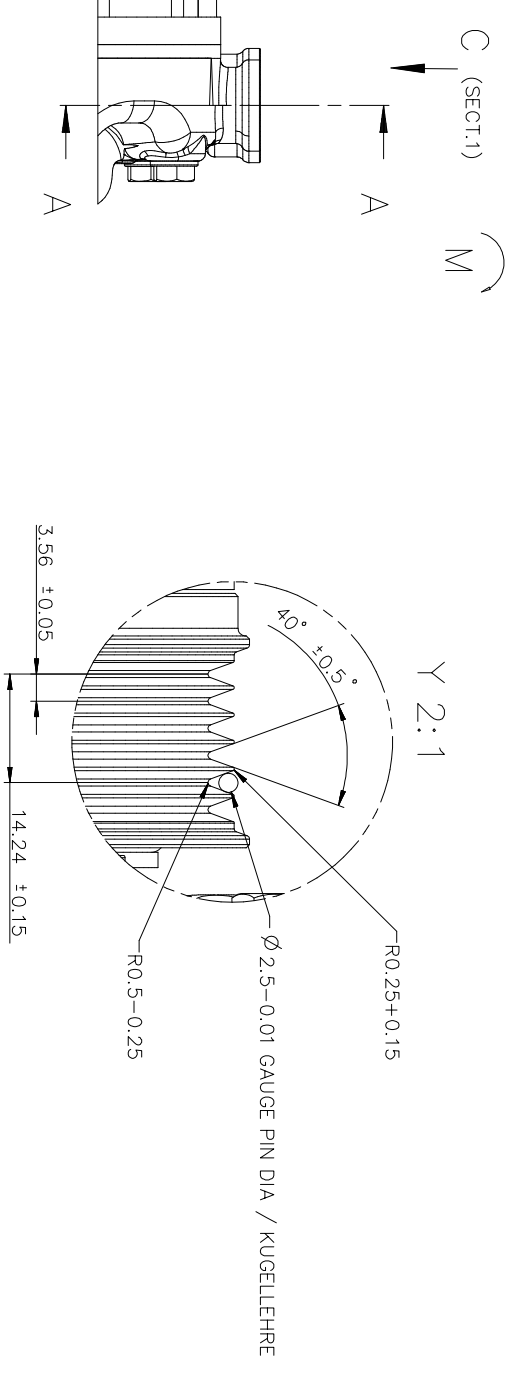


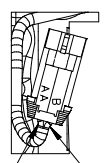
PN	REV	DATE	DESIGN	CHK	APPV

REV	DATE	DESCRIPTION



COMPRESSOR SPECIFICATION

DISPLACEMENT / HUBVOLUMEN (MAX.)	125.1 cm ³ /REV
DISPLACEMENT / HUBVOLUMEN (MIN.)	6.2 cm ³ /REV
NUMBER OF CYLINDER / ANZAHL DER ZYLINDER	6
ALLOWABLE CONTINUOUS SPEED / ZUL.DAUERLAUFDREHZAHL (MAX.)	8000 r.p.m.
MAX.DOWNSHIFT SPEED / MAX.DREHZAHL UEBER MAX.10 STUNDEN	8500 r.p.m.
MAX.DOWNSHIFT SPEED / MAX.DREHZAHL UEBER MAX.10 MINUTEN	9200 r.p.m.
MINIMUM SPEED / MINIMUM DREHZAHL	575 r.p.m.
REFRIGERANT / KAELEMITTEL	R134a
TRANSPORT GAS AND PRESSURE / TRANSPORTGASFUELLUNG	NITROGEN (N ₂) MAX 1.6 bar abs
COMPRESSOR-SETTING POINT / VERDICHTER-EINSTELLUNG (B/P)	1.47/0.186±0.015 MPaG (25F-TYPE)
MIN.COOLING CAPACITY / MIN. KAELELEISTUNG	3.3 kW @ 800 r.p.m.
ELEC.CONNECTOR / ELEK. STECKER	PACKARD 1216 2343
OIL SP-10 OR EQUIVALENT FILLING REQUIREMENT: OELFUELLUNG BEDARF SP-10 ODER GLEICHWERTIG:	120 cm ³ ±15 cm ³



POLARITY DOES AFFECT FUNCTION
POLARITAET HAT EINFLUSS AUF FUNKTION
CONNECTOR SUITABLE TO 90 414 940
STECKER PASSEND ZU 90 414 940

NO CUSTOMER IP LOGO APPEARS ON CONNECTOR.
KEIN CUSTOMERLOGO BEDARF AUF STECKER SEIN.

CLUTCH SPECIFICATION / KUPPLUNG SPEZIFIKATION

BREAK TORQUE / DURCHRUTSCH-MOMENT	32.4 Nm
MINI ENGAGE - VOLTAGE / MIN.EINKUPPEL-SPANNUNG	DC 7.5 V
POWER CONSUMPTION / LEISTUNGSANNAHME	48 W
BELT TYPE / RIEMEN-TYP	PV6
WEIGHT / GEWICHT	2.0 KG
THERMAL FUSE CUT OFF TEMP. / ABSCHALTTEMP.	182±0.5°C
CLUTCH CENTRE NUT / ZENTRALSCHRAUBE	19.6 ±1 Nm

DISPLACEMENT / HUBVOLUMEN (MAX.)	125.1 cm ³ /REV
DISPLACEMENT / HUBVOLUMEN (MIN.)	6.2 cm ³ /REV
NUMBER OF CYLINDER / ANZAHL DER ZYLINDER	6
ALLOWABLE CONTINUOUS SPEED / ZUL.DAUERLAUFDREHZAHL (MAX.)	8000 r.p.m.
MAX.DOWNSHIFT SPEED / MAX.DREHZAHL UEBER MAX.10 STUNDEN	8500 r.p.m.
MAX.DOWNSHIFT SPEED / MAX.DREHZAHL UEBER MAX.10 MINUTEN	9200 r.p.m.
MINIMUM SPEED / MINIMUM DREHZAHL	575 r.p.m.
REFRIGERANT / KAELEMITTEL	R134a
TRANSPORT GAS AND PRESSURE / TRANSPORTGASFUELLUNG	NITROGEN (N ₂) MAX 1.6 bar abs
COMPRESSOR-SETTING POINT / VERDICHTER-EINSTELLUNG (B/P)	1.47/0.186±0.015 MPaG (25F-TYPE)
MIN.COOLING CAPACITY / MIN. KAELELEISTUNG	3.3 kW @ 800 r.p.m.
ELEC.CONNECTOR / ELEK. STECKER	PACKARD 1216 2343
OIL SP-10 OR EQUIVALENT FILLING REQUIREMENT: OELFUELLUNG BEDARF SP-10 ODER GLEICHWERTIG:	120 cm ³ ±15 cm ³

SANDEN

METRIC DIMENSIONS SHOWN IN MILLIMETERS
THE INFORMATION CONTAINED IN THIS DRAWING IS THE SOLE PROPERTY OF SANDEN INTERNATIONAL CORPORATION AND REPRODUCTION IN ANY MANNER WITHOUT WRITTEN PERMISSION OF SANDEN INTERNATIONAL, INC IS PROHIBITED.

INTERPRETATION OF THIS DRAWING PER
ASME Y14.3M-1994

THIRD ANGLE PROJECTION

DATE: 06/25/08
APPV: A. ARMENDARIZ
DESIGN: S. MARTINEZ
CHECK: S. MARTINEZ
DATE: 06/25/08
APPV: R. MARTINEZ
DESIGN: R. MARTINEZ
CHECK: R. MARTINEZ

NAME: COMPRESSOR
DWG. NO.: 4251-6000