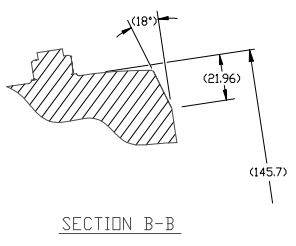
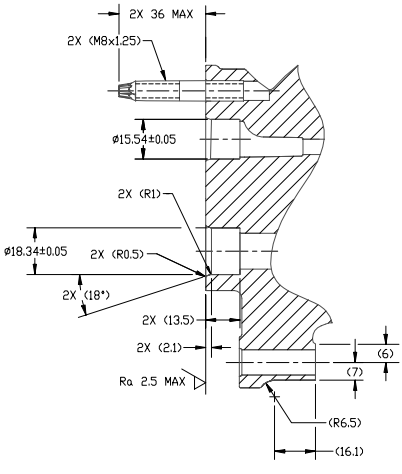


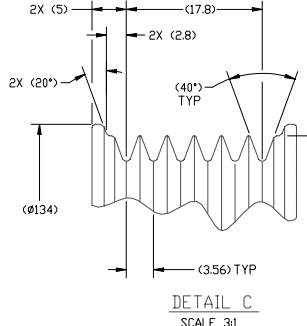
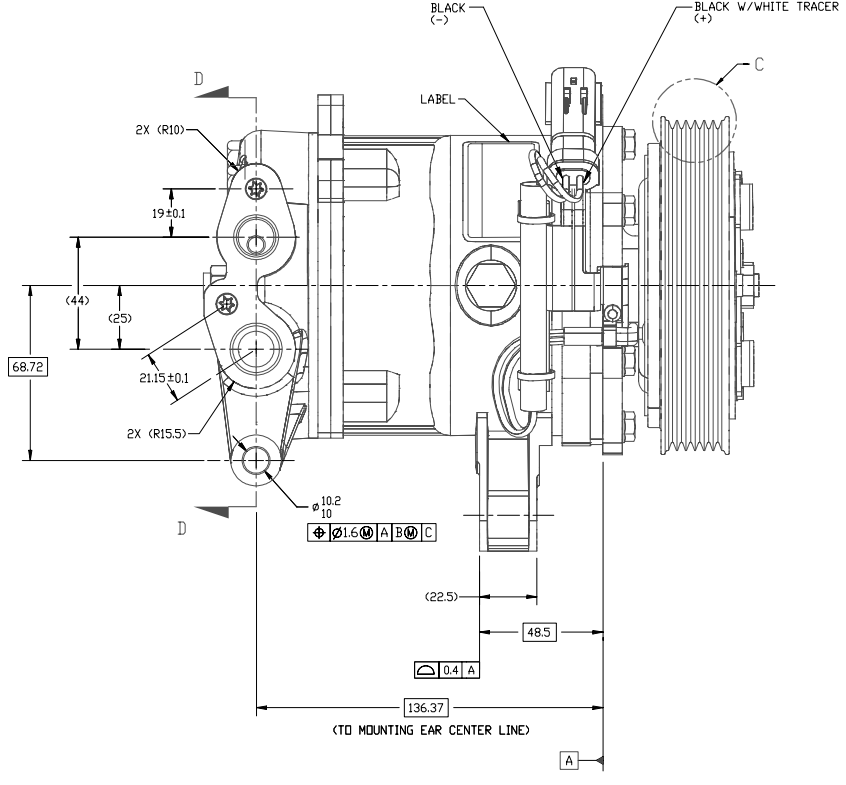
PCSN	REV	APPV DATE	REVISIONS	DWN	DSGN	CHK	APPV
			INITIAL RELEASE				



SECTION B-B



SECTION D-D



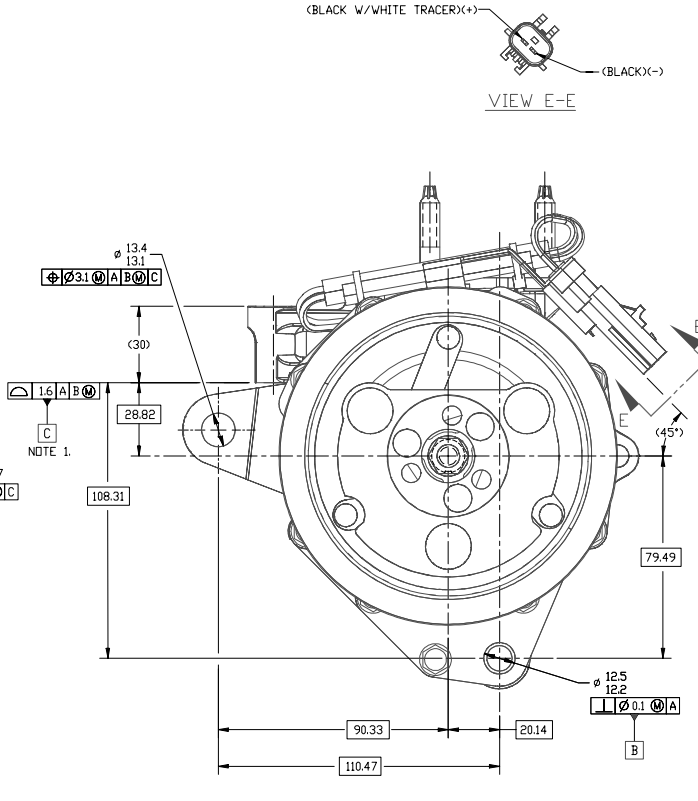
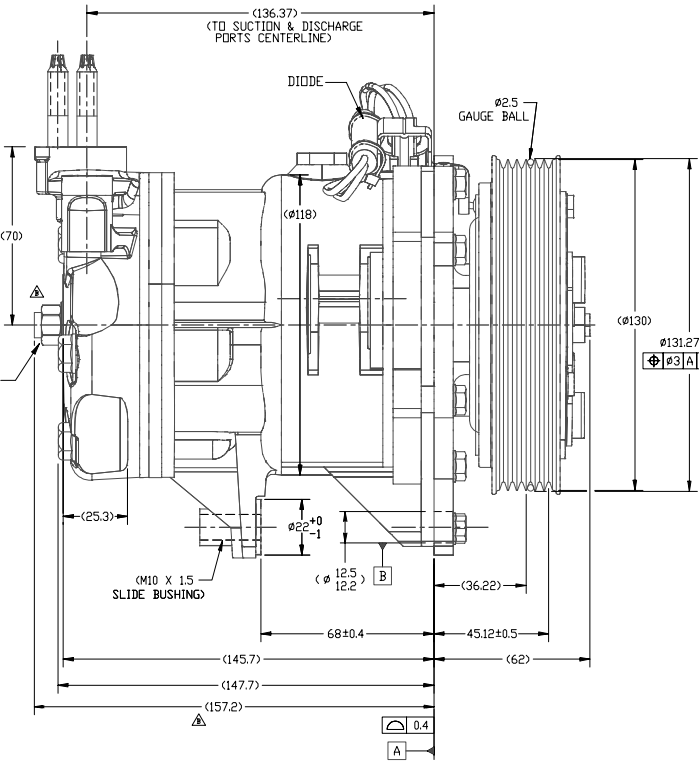
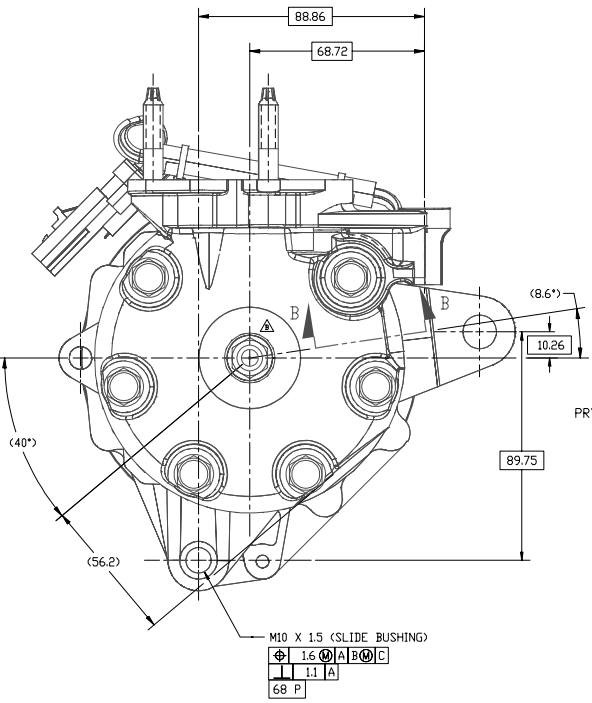
DETAIL C  
SCALE 3:1

REV	LEVEL	RELEASED FOR	DATE	REVISIONS	DWN	DSGN	CHK	APPV
A	1	INITIAL RELEASE	7/23/05					
A	2	DESIGN VALIDATION	7/23/05					
A	3	PRODUCTION VAL.	7/23/05					
A	4	PRODUCTION VAL.	7/23/05					
A	5	PRODUCTION VAL.	7/23/05					
A	6	PRODUCTION VAL.	7/23/05					

<b>SANDEN</b>	
SANDEN INTERNATIONAL (U.S.A.), INC.	
DRWN: J. Sakowicz	SCALE REF: 1:1
CHK: Dennis Lee 2/20/05	SCALE REF: 1:1
APPV: ND 1/2	DATE: 7/23/05
This drawing and the information contained herein are CONFIDENTIAL and PROPRIETARY to Sanden International (U.S.A.), Inc. and shall not be used, copied, or disclosed to others without the written permission of Sanden International (U.S.A.), Inc.	
INTERPRETATION OF THIS DRAWING PER ASME Y14.5M-1994	
THIRD ANGLE PROJECTION	
MATERIAL:	
NAME: COMPRESSOR	
DWG. NO. 4335-6000	SHT 2/2
REV. B	

DO NOT SCALE

PCSN	REV	APPV DATE	REVISIONS	DWN	DSGN	CHK	APPV
			INITIAL RELEASE				
			REV 4335-6000 REV. K				
			REV 4335-6000 WAS 4967-6470				
			FOR 13770 WAS 05041 PRV OPENING				
			PRESSURE RANGE WAS 500-600 PSIG				
			K. 950-482 kg/cm <sup>2</sup> G				



VIEW E-E

- NOTE:
- ORIGIN AXIS TO BE ESTABLISHED PARALLEL TO DATUM C.
  - COMPRESSOR/CLUTCH MUST CONFORM TO THE REQUIREMENTS OF SANDEN STANDARDS SES-214 REV. B, AND SIA-ES-2002 REV. B.
  - N<sub>2</sub> HOLDING CHARGE DELETED.
  - SHIPPING PAD ASSEMBLIES AND FASTENERS NOT SHOWN.

COMPRESSOR SPECIFICATION (REF.)

DISPLACEMENT PER REVOLUTION	154.9 cc / REV. ( 9.5cuin. / REV.)
MAXIMUM ALLOWABLE R.P.M.	8000 R.P.M.
MAXIMUM ALLOWABLE CONTINUOUS R.P.M.	6000 R.P.M.
REFRIGERANT	R134A
OIL (SP-15)	240 cc ±10 cc
WEIGHT	16.7 LB (7.5 KG)
PRV OPENING PRESSURE RANGE	508-595 PSIG (35.7-41.8 kg/cm <sup>2</sup> G).

CLUTCH SPECIFICATION (REF.)

RATED VOLTAGE	12V DC
BREAKAWAY TORQUE	3.5 kgf·m MIN. @ 12V
MINIMUM ENGAGEMENT VOLTAGE	7.5V @ AIR GAP 0.6mm
POWER CONSUMPTION	49 WATTS MAX.
BELT TYPE	PV6
MAXIMUM ALLOWABLE BELT TENSION	120 kgf
PULLEY DIAMETER (TOP OF GROOVE)	Ø130mm (Ø5.12 in.)
CLUTCH TYPE	STANDARD

REV	LEVEL	RELEASED FOR	DATE	REVISIONS	DWN	DSGN	CHK	APPV
A	1	INITIAL RELEASE	7/23/05					
A	2	DESIGN VALIDATION	7/23/05					
A	3	PRODUCTION VAL.	7/23/05					
A	4	PRODUCTION VAL.	7/23/05					
A	5	PRODUCTION VAL.	7/23/05					
A	6	PRODUCTION VAL.	7/23/05					

<b>SANDEN</b>	
SANDEN INTERNATIONAL (U.S.A.), INC.	
DRWN: J. Sakowicz	SCALE REF: 1:1
CHK: Dennis Lee 2/20/05	SCALE REF: 1:1
APPV: ND 1/2	DATE: 7/23/05
This drawing and the information contained herein are CONFIDENTIAL and PROPRIETARY to Sanden International (U.S.A.), Inc. and shall not be used, copied, or disclosed to others without the written permission of Sanden International (U.S.A.), Inc.	
INTERPRETATION OF THIS DRAWING PER ASME Y14.5M-1994	
THIRD ANGLE PROJECTION	
MATERIAL:	
NAME: COMPRESSOR	
DWG. NO. 4335-6000	SHT 1/2
REV. B	

DO NOT SCALE