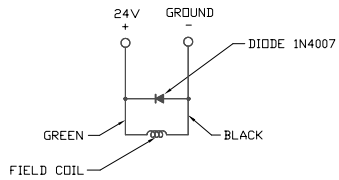
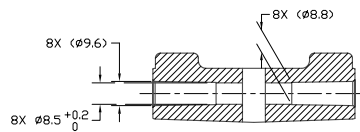


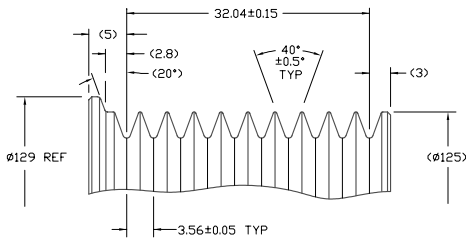
PCEN	REV	APPV	DATE	REVISIONS	DWN	ISSN	CHK	APPV
				INITIAL ISSUE				



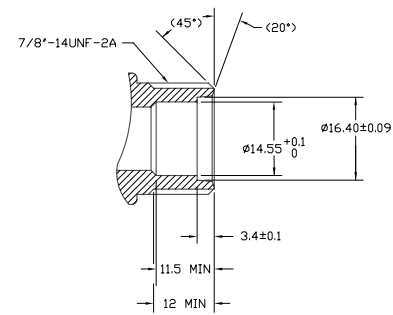
CIRCUIT DIAGRAM



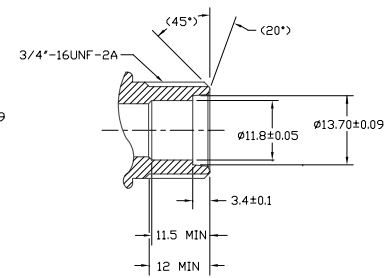
SECTION A-A



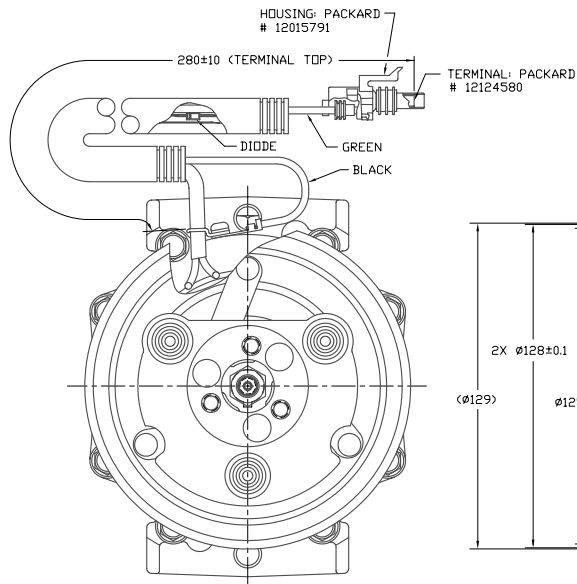
DETAIL B
SCALE - 3:1



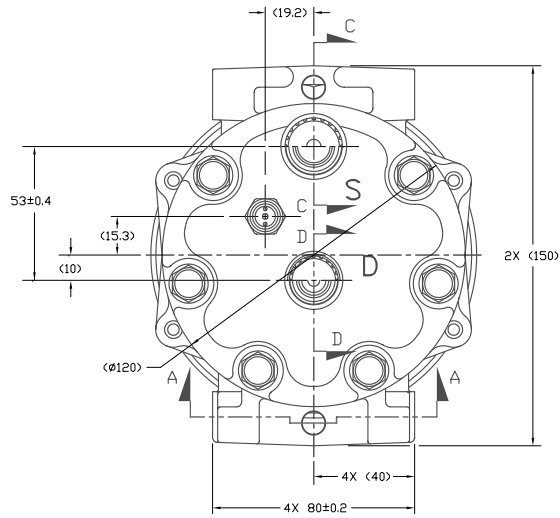
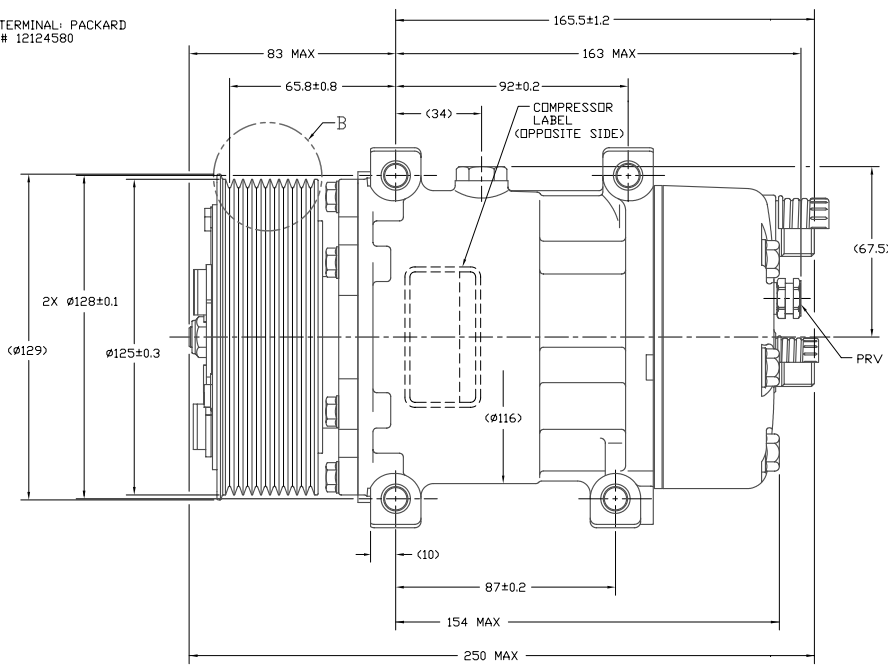
SECTION C-C
SCALE - 2:1
(SECTION SHOWN WITH SEAL CAP REMOVED)



SECTION D-D
SCALE - 2:1
(SECTION SHOWN WITH SEAL CAP REMOVED)



CLOCKWISE ROTATION



COMPRESSOR SPECIFICATIONS (REF)

DISPLACEMENT PER REVOLUTION	154.9 cc/rev. (9.5 cuin. / rev.)
MAXIMUM ALLOWABLE R.P.M.	8000 R.P.M.
MAXIMUM ALLOWABLE CONTINUOUS R.P.M.	6000 R.P.M.
REFRIGERANT	R134a
OIL (SP-15)	200cc (6.76 fl. oz.)

CLUTCH SPECIFICATIONS (REF)

RATED VOLTAGE	DC 24V
BREAKAWAY TORQUE	3.5 kgF-m min. @ 24V
MINIMUM ENGAGEMENT VOLTAGE	16V @ AIR GAP 0.6mm
POWER CONSUMPTION	34 watts max.
BELT TYPE	PV10
MAXIMUM ALLOWABLE BELT TENSION	120 kgf
PULLEY DIAMETER	ø125mm (4.92 in.)
CLUTCH TYPE	STANDARD

REV	RELEASED FOR	DATE	SCALE	PROJECTION	UNIT
A	RELEASED FOR: R. Rodriguez	5/19/06	1:1	THIRD ANGLE	METRIC
A	APPROVED: Note Burns	5-19-06	1:1	THIRD ANGLE	METRIC
A	RELEASED FOR: PRODUCTION	5/19/06	1:1	THIRD ANGLE	METRIC
A	RELEASED FOR: PRODUCTION	5/19/06	1:1	THIRD ANGLE	METRIC
A	RELEASED FOR: PRODUCTION	5-1-06	1:1	THIRD ANGLE	METRIC
SANDEN INTERNATIONAL (U.S.A.), INC. DRAWN: [] CHECKED: [] SCALE REF: 1:1 SCALE REF: 1:1 METRIC					
This drawing and the information contained herein are CONFIDENTIAL and PROPRIETARY to Sanden International (U.S.A.), Inc. and shall not be used, copied or disclosed to others without the written permission of Sanden International (U.S.A.), Inc.					
INTERPRETATION OF THIS DRAWING PER ASME Y14.5M-1994					
THIRD ANGLE PROJECTION					
MATERIAL:					
NAME:					
COMPRESSOR					
DWG. NO. 4403-6000					
REV A					

DO NOT SCALE