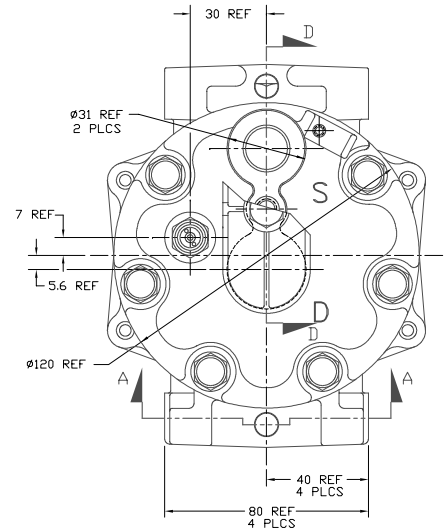
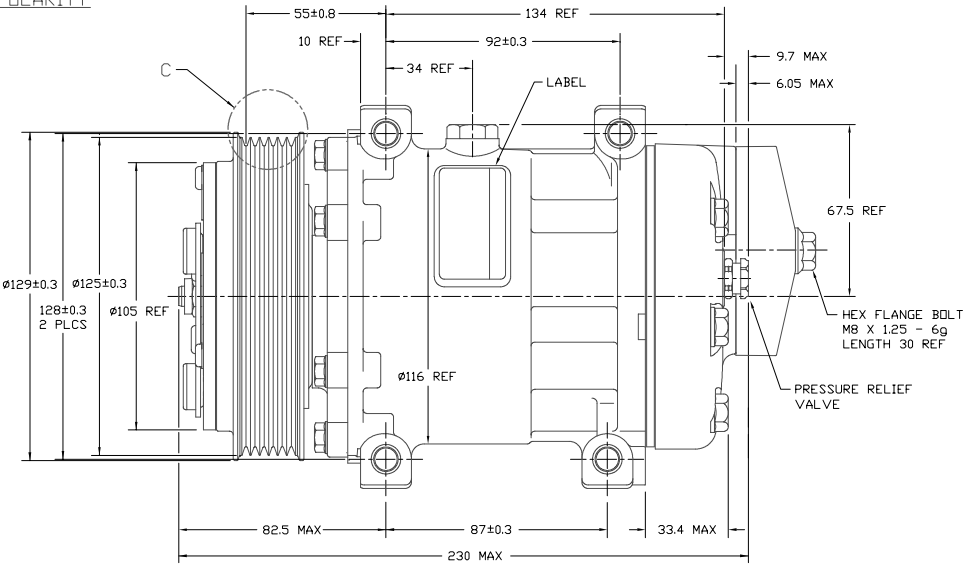
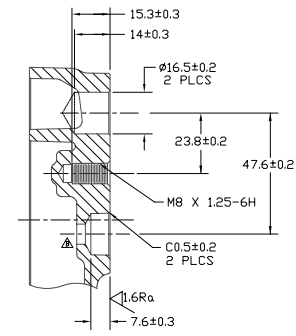
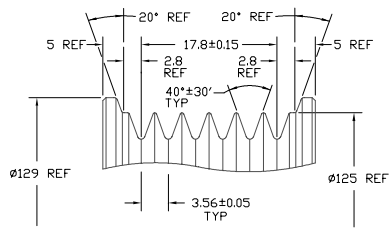
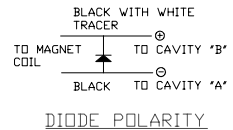
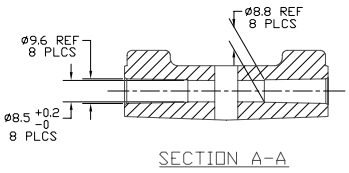
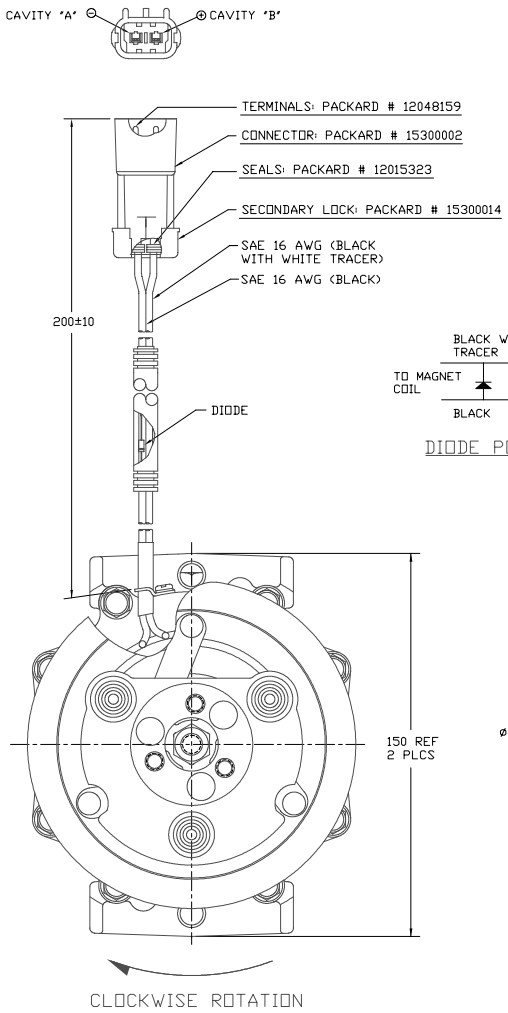


PCDN	REV	APPV	DATE	REVISIONS	DWN	ESGN	CHK	APPV
000009	Δ	Δ	3/3/06	INITIAL ISSUE	JS	JB	DRL	UV
				UPDATED DISCHARGE ORIFICE DIAMETER				



COMPRESSOR SPECIFICATIONS (REF)

DISPLACEMENT PER REVOLUTION	154.9 cc / rev. (9.5cu.in. / rev.)
MAXIMUM ALLOWABLE R.P.M.	8000 R.P.M.
MAXIMUM ALLOWABLE CONTINUOUS R.P.M.	6000 R.P.M.
REFRIGERANT	R134a
OIL (SP-15)	300 cc (10.1 fl.oz.)
WEIGHT	7.4 kgf (16.4 lb.)

PLUTCH SPECIFICATIONS (REF)

RATED VOLTAGE	DC 12V
BREAKAWAY TORQUE	3.5 kgf-m min. @ 12V
MINIMUM ENGAGEMENT VOLTAGE	7.5V @ AIR GAP 0.6mm
POWER CONSUMPTION	49 watts max.
BELT TYPE	PV6 TYPE
MAXIMUM ALLOWABLE BELT TENSION	90 kgf
PULLEY DIAMETER	Ø125 mm (4.9 in.)
CLUTCH TYPE	HEAVY DUTY

RELEASED FOR DESIGN DEVELOPMENT FROM 02/27/06 BY 2/2/06/06 DATE 02/27/06 RELEASED FOR DESIGN VALIDATION FROM H. Hamilton DATE 02/27/06 RELEASED FOR PRODUCTION VAL. 2 FROM H. Hamilton DATE 02/27/06 RELEASED FOR PRODUCTION VAL. 2 FROM H. Hamilton DATE 02/27/06	SANDEN SANDEN INTERNATIONAL CORPORATION DRAWN SCALE REF 1:1 PLOTTED SCALE REF 1:1 METRIC This drawing and the information contained herein are CONFIDENTIAL and PROPRIETARY to Sanden International (U.S.A.), Inc. and shall be used, copied, or disclosed to others without the written permission of Sanden International (U.S.A.), Inc. INTERPRETATION OF THIS DRAWING PER ASME Y14.5M-1994 THIRD ANGLE PROJECTION MATERIAL: - NAME: COMPRESSOR DWG. NO. 4473-6000 REV. B
--	--

DO NOT SCALE