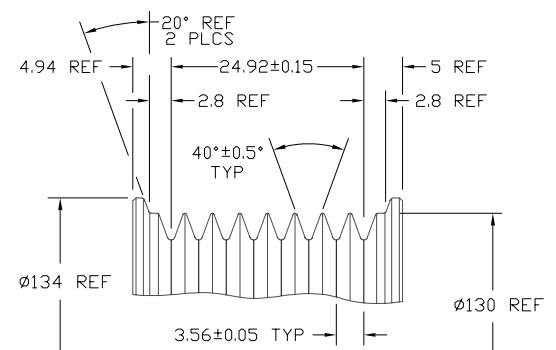
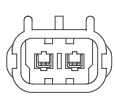
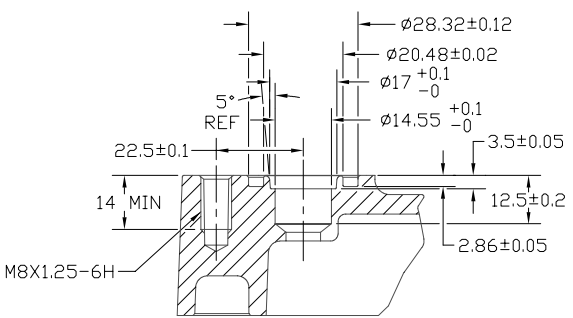


SECTION A-A

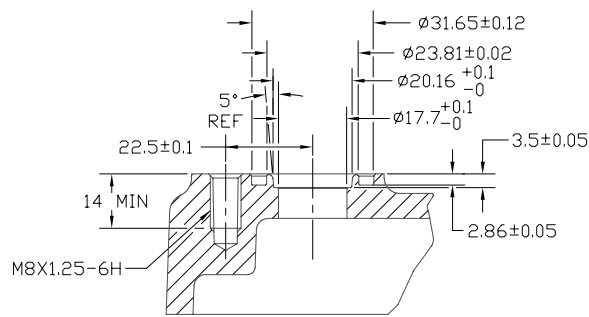


DETAIL C  
SCALE 2:1



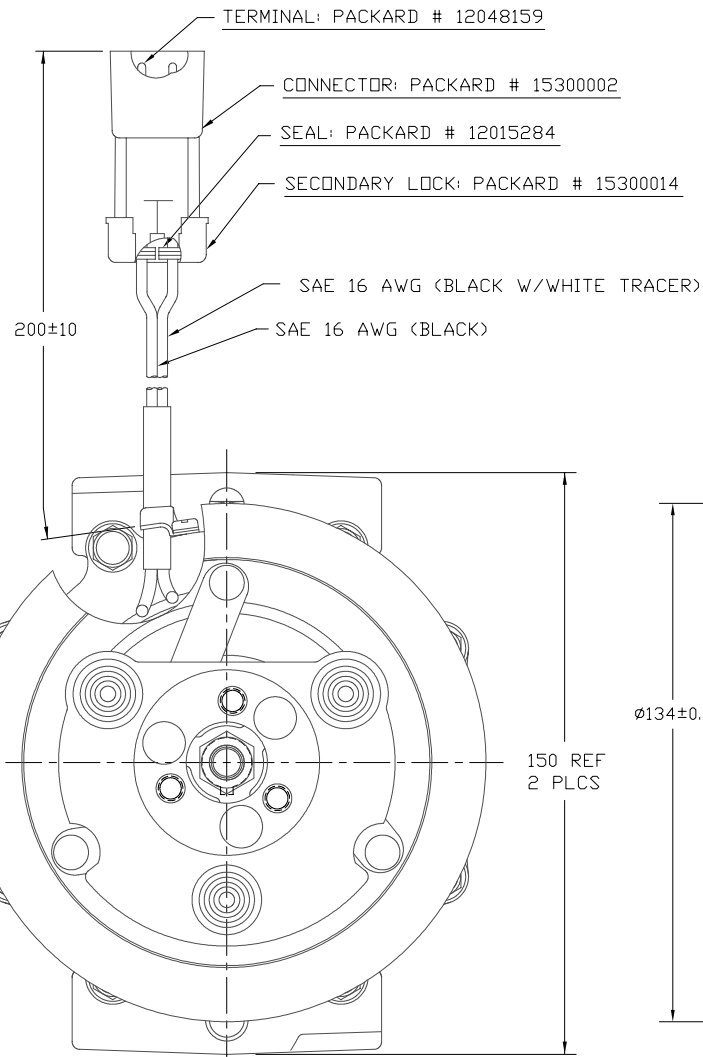
SECTION E-E

SECTION SHOWN WITHOUT SHIPPING PAD ASSEMBLY ROTATED 15°

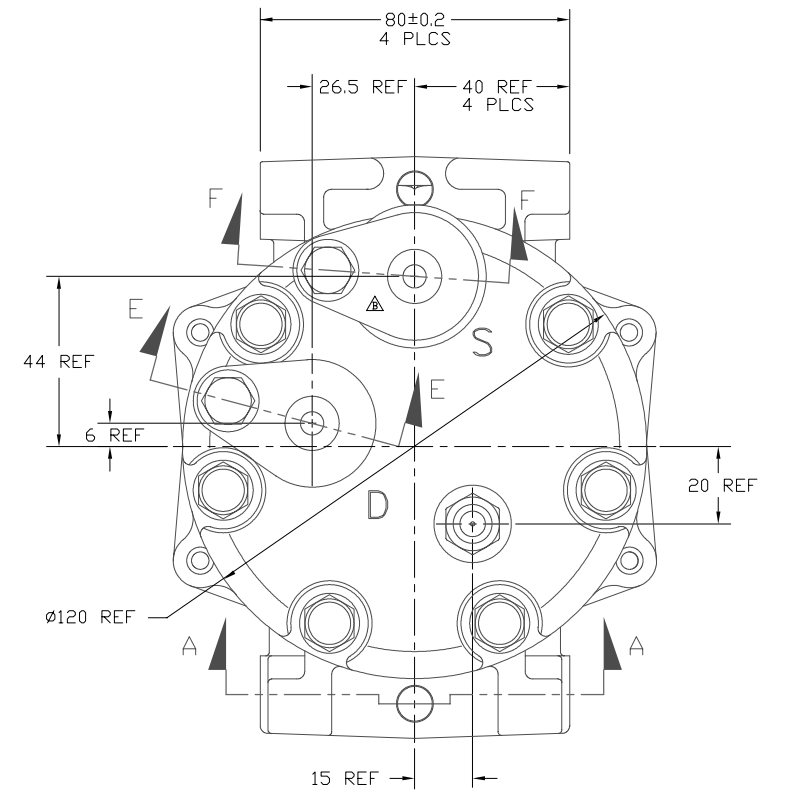
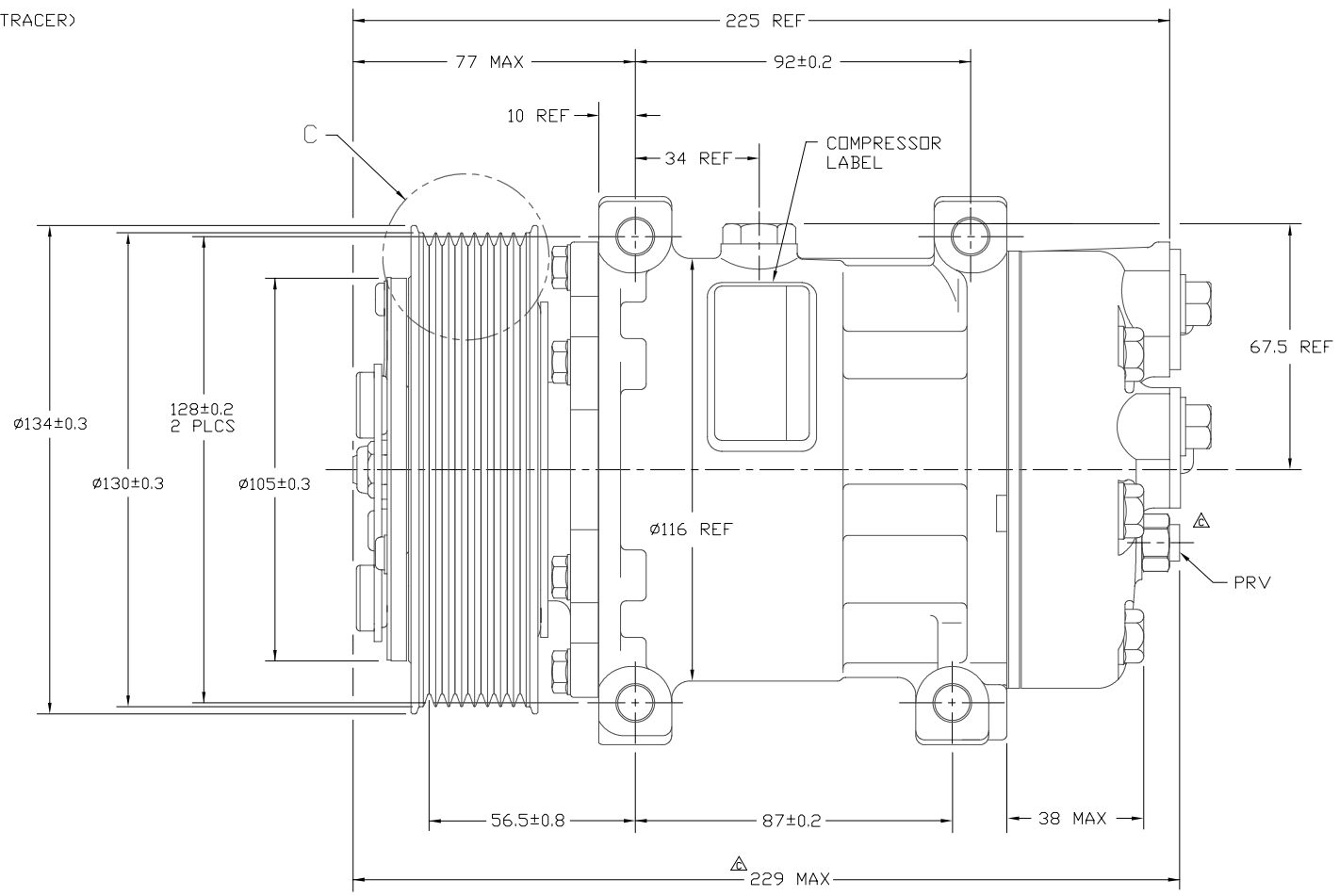


SECTION F-F

SECTION SHOWN WITHOUT SHIPPING PAD ASSEMBLY ROTATED 5°



CLOCKWISE ROTATION



COMPRESSOR SPECIFICATIONS (REF)

DISPLACEMENT PER REVOLUTION	154.9 cc / rev. ( 9.5cu.in. / rev. )
MAXIMUM ALLOWABLE R.P.M.	8000 R.P.M.
MAXIMUM ALLOWABLE CONTINUOUS R.P.M.	6000 R.P.M.
REFRIGERANT	R134a
OIL ( SP-15 )	300 cc ( 10.1 fl.oz. )
WEIGHT	7.5 kgf ( 15.7 lb. )

CLUTCH SPECIFICATIONS (REF)

RATED VOLTAGE	DC 12V
BREAKAWAY TORQUE	3.5 kgf-m min. @ 12V
MINIMUM ENGAGEMENT VOLTAGE	7.5V MAX @ AIR GAP 0.6mm
POWER CONSUMPTION	49 watts max.
BELT TYPE	PV8
MAXIMUM ALLOWABLE BELT TENSION	120 kgf
PULLEY DIAMETER	Ø130mm ( 5.1 in. )
CLUTCH TYPE	HEAVY DUTY

PDCN	REV.	APPV DATE	REVISIONS	DWN	DSGN	CHK	APPV
			INITIAL ISSUE				
2005188	A	09/15/05	CHANGED SUCTION PORT SHIPPING PLATE FROM 8003-6330 TO 8003-6340	RSR	NB	DRL	NB
2006310	A	12/11/06	PRV: 4307-6470 WAS 4967-6470 229 MAX WAS 228 MAX	RSR	JW	DRL	TK

REV. LEVEL	RELEASED FOR: ENG'G DEVELOPMENT	<p>SANDEN INTERNATIONAL ( U.S.A. ), INC.</p>	DRAWN SCALE REF 1:1 PLOTTED SCALE REF NONE METRIC This drawing and the information contained hereon are CONFIDENTIAL and PROPRIETARY to Sanden International (U.S.A.), Inc., are received in CONFIDENCE and shall not be used, copied, or disclosed to others without the written permission of Sanden International (U.S.A.), Inc.
DSGN	M Harrington		
DWN	J Sokolowski		
CHK	Dennis Lee 4/8/04		
APPV.	NB JC		
DATE	4/12/04		
REV. LEVEL	RELEASED FOR: DESIGN VALIDATION	INTERPRETATION OF THIS DRAWING PER ASME Y14.5M-1994 THIRD ANGLE PROJECTION	SIZE D
DSGN	M Harrington		
APPV.	NB JC		
DATE	4/13/04		
REV. LEVEL	RELEASED FOR: PRODUCTION VAL'D.	MATERIAL: NAME COMPRESSOR	DWG. NO. 4493-6000
DSGN	M Harrington		
APPV.	NB JC		
DATE	4/13/04		
REV. LEVEL	RELEASED FOR: PRODUCTION		
DSGN	M Harrington		
APPV.	NB JC		
DATE	4/13/04		

DO NOT SCALE