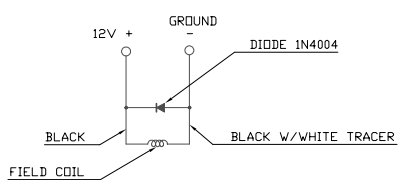
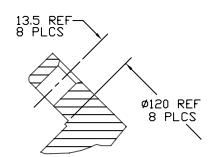


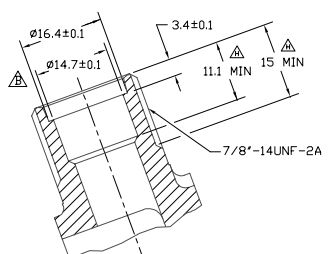
16 | 15 | 14 | 13 | 12 | 11 | 10 | 9 | 8 | 7 | 6 | 5 | 4 | 3 | 2 | 1



CIRCUIT DIAGRAM

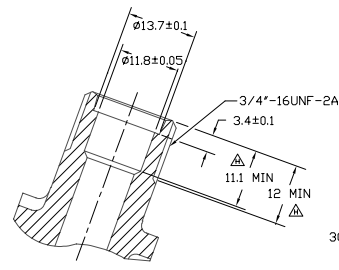


SECTION A-A



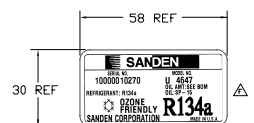
SECTION B-B

SCALE 2:1  
(SECTION SHOWN WITH SEAL CAP REMOVED)

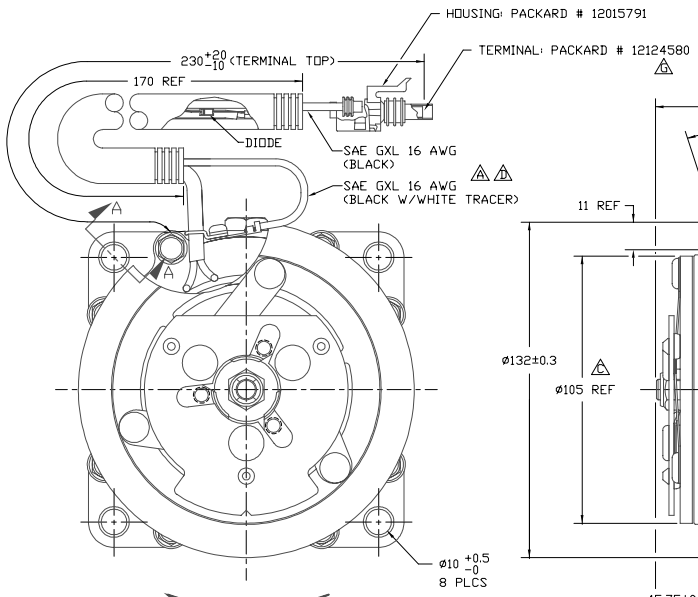


SECTION C-C

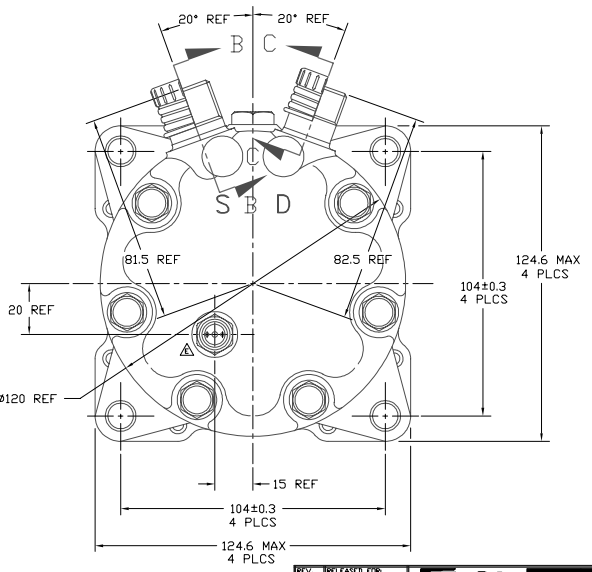
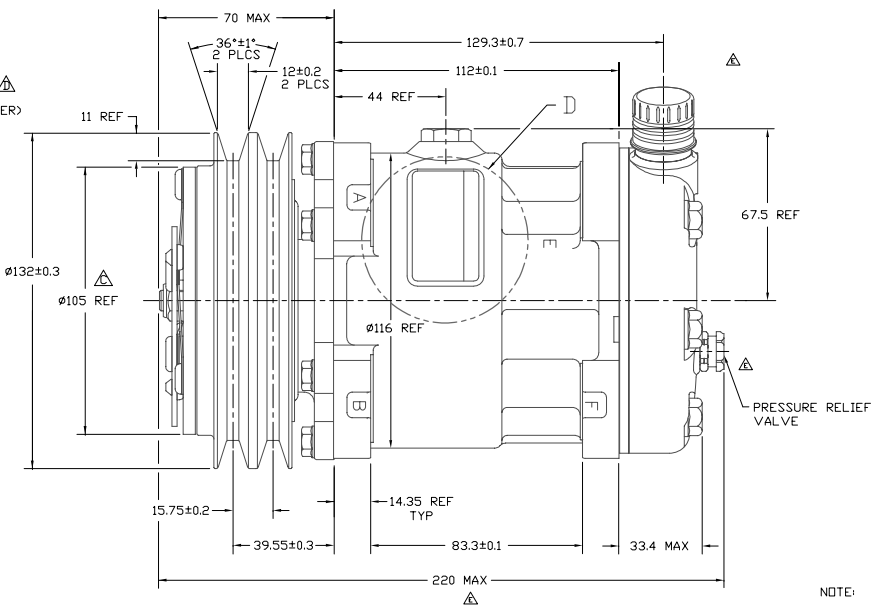
SCALE 2:1  
(SECTION SHOWN WITH SEAL CAP REMOVED)



DETAIL D  
ROTATED 90° CCW



CLOCKWISE ROTATION



NOTE:  
1. COMPRESSOR TO BE CHARGED WITH NITROGEN PRIOR TO SHIPPING WITHIN 0.2 TO 1.6 kg/cm<sup>2</sup>.

COMPRESSOR SPECIFICATIONS (REF.)

|                                     |                                      |
|-------------------------------------|--------------------------------------|
| DISPLACEMENT PER REVOLUTION         | 154.9 cc / rev. ( 9.5cu.in. / rev. ) |
| MAXIMUM ALLOWABLE R.P.M.            | 8000 R.P.M.                          |
| MAXIMUM ALLOWABLE CONTINUOUS R.P.M. | 6000 R.P.M.                          |
| REFRIGERANT                         | R134a                                |
| OIL ( SP-15 )                       | 240 cc ( 8.1 floz. )                 |
| WEIGHT                              | 7.6 kg ( 16.8 lb. )                  |

CLUTCH SPECIFICATIONS (REF.)

|                                |                      |
|--------------------------------|----------------------|
| RATED VOLTAGE                  | DC 12V               |
| BREAKAWAY TORQUE               | 3.5 kgf-m min. @ 12V |
| MINIMUM ENGAGEMENT VOLTAGE     | 7.5V @ AIR GAP 0.6mm |
| POWER CONSUMPTION              | 49 watts max.        |
| BELT TYPE                      | A TYPE               |
| MAXIMUM ALLOWABLE BELT TENSION | 60 kgf per belt      |
| PULLEY DIAMETER                | 0.132 m ( 5.2 in. )  |
| CLUTCH TYPE                    | HEAVY DUTY           |

| PCSN    | REV. | APPRV DATE | REVISIONS  | DWN | ESGN | CHK | APPV      |
|---------|------|------------|--|-----|------|-----|-----------|
| 93404   | Δ    | 2/09/94    | ADDED DIODE CALLOUT  | PW  | DRL  | DRL | EMA       |
| 94127   | Δ    | 6/15/94    | #147451 WAS #1455 *01.0  | RK  | JKN  | JKN | EMA       |
| 95333   | Δ    | 7/19/95    | CHANGED #120 REF TO #105 REF AND UPDATED TO CURRENT STANDARDS  | RH  | RK   | DD  | EMA       |
| 99999   | Δ    | 4/26/99    | CHANGED FROM MONOPOLE TO DIPOLE FIELD COIL ASSEMBLY.   | RH  | LM   | DRL | DD HT     |
| 000004  | Δ    | 6/13/00    | CHANGED PRV FROM 4602-6470 TO 4967-6470. SELECTED 10M 252 MAX. 230 MAX WAS 239 MAX. UPDATED TITLE BLOCK. | TG  | LM   | DRL | D5000     |
| 99007   | Δ    | 11/12/01   | OIL (SP-15) WAS OIL (SP-20)  | DKC | LK   | DRL | MY        |
| 000340  | Δ    | 1/29/03    | TERMINAL PACKARD # 12124580 WAS 120018RE   | DRL | HF   | DRL | BP        |
| 000606  | Δ    | 02/13/06   | SECTION B-B 11.1 MIN WAS 11 MIN 15 MIN WAS 11.1 MIN 12 MIN WAS 11.1 MIN                                  | RSR | SN   | DRL | JW for NB |
| 0006370 | Δ    | 10/30/06   | ADDED NOTE 1.  | JS  | CW   | DRL | EMA       |

|             |                                 |        |                       |
|-------------|---------------------------------|--------|-----------------------|
| REV. LEVEL  | RELEASED FOR DESIGN DEVELOPMENT | DESIGN | Dennis Lee            |
| DWN         | SCALE REF                       | 1:1    | PLOTTED SCALE REF 1:1 |
| CHK         | EMA                             | Dmc    |                       |
| APPRV       | DESIGN                          | DATE   | 6/11/93               |
| DESIGN VAL. | DESIGN                          | DATE   | 6/11/93               |
| APPRV       | DESIGN                          | DATE   | 6/11/93               |
| DESIGN VAL. | DESIGN                          | DATE   | 6/11/93               |
| APPRV       | DESIGN                          | DATE   | 6/11/93               |
| DESIGN VAL. | DESIGN                          | DATE   | 6/11/93               |
| APPRV       | DESIGN                          | DATE   | 6/11/93               |
| DESIGN VAL. | DESIGN                          | DATE   | 6/11/93               |
| APPRV       | DESIGN                          | DATE   | 6/11/93               |
| DESIGN VAL. | DESIGN                          | DATE   | 6/11/93               |

**SANDEN**  
 SANDEN INTERNATIONAL CORPORATION, INC.  
 4647-6000  
 This drawing and the information contained herein are CONFIDENTIAL and PROPRIETARY to Sanden International (U.S.A.), Inc. and shall not be used, copied, or disclosed to others without the written permission of Sanden International (U.S.A.), Inc.  
 INTERPRETATION OF THIS DRAWING PER ASME Y14.5M-1994  
 THIRD ANGLE PROJECTION  
 MATERIAL:   
 NAME: COMPRESSOR  
 DWG. NO. 4647-6000  
 REV. J

DO NOT SCALE

16 | 15 | 14 | 13 | 12 | 11 | 10 | 9 | 8 | 7 | 6 | 5 | 4 | 3 | 2 | 1