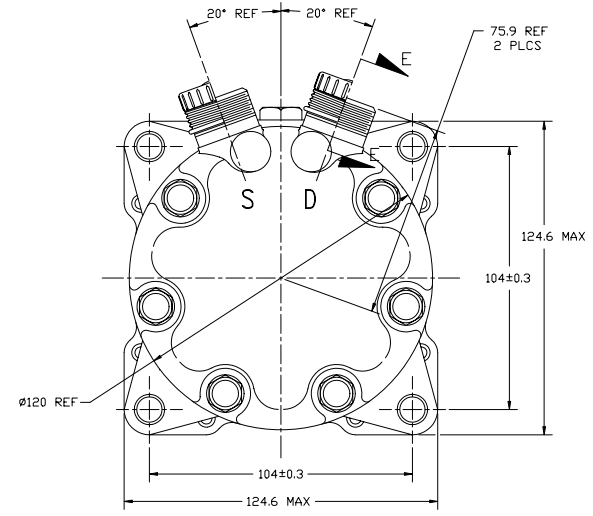
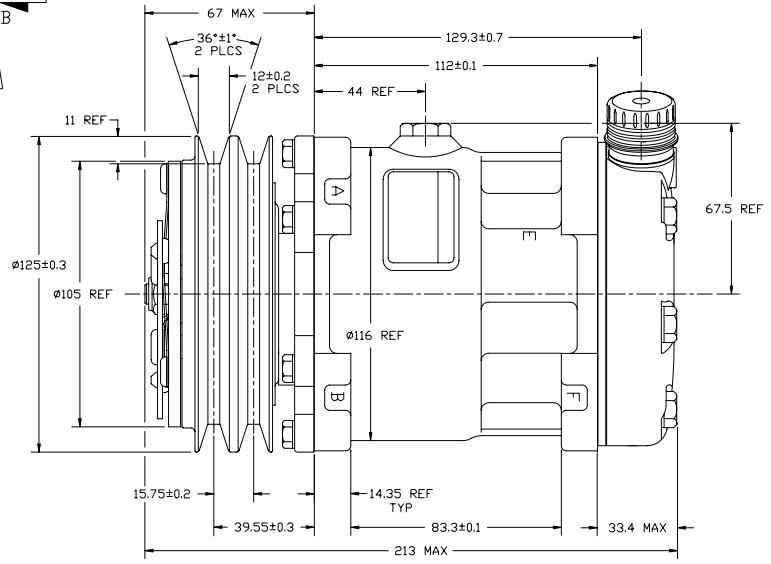
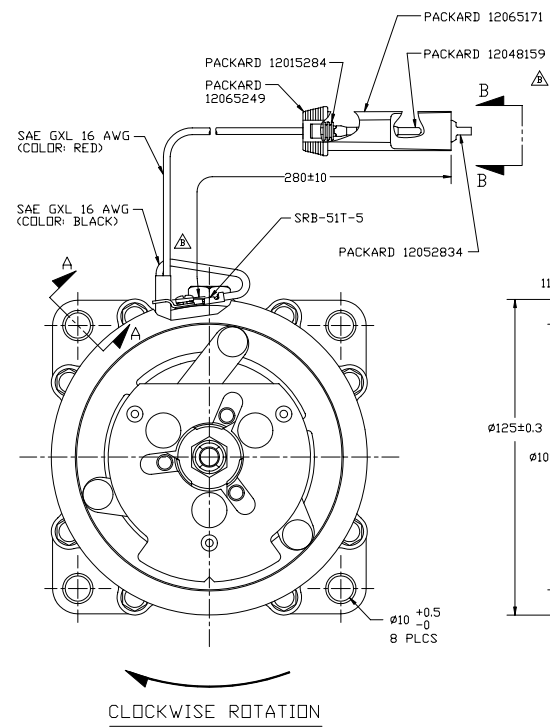
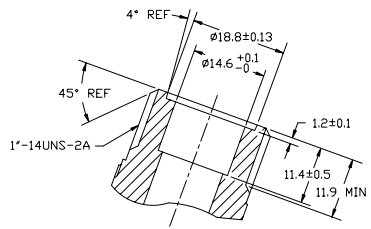
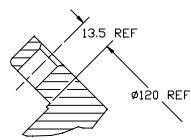


PCDN	REV	APPV DATE	REVISIONS	DWN	ESGN	CHK	APPV
			INITIAL ISSUE				
99187	Δ	04/23/99	CHANGED TO DOUBLE FIELD COIL ADDED VIEW B-B	JKK	ZAK	JKK	JKK
99077	Δ	11/06/01	UPDATED TO CURRENT TITLE BLOCK DEL. 15P-15D WAS DEL. 15P-20D	JKK	ZAK	JKK	JKK



COMPRESSOR SPECIFICATIONS

DISPLACEMENT PER REVOLUTION	154.9 cc / rev. (9.5cuin. / rev.)
MAXIMUM ALLOWABLE R.P.M.	8000 R.P.M.
MAXIMUM ALLOWABLE CONTINUOUS R.P.M.	6000 R.P.M.
REFRIGERANT	R134a
OIL (SP-15)	300 cc (10.1 fl.oz.)
WEIGHT	7.4 kg (16.4 lb.)

CLUTCH SPECIFICATIONS

RATED VOLTAGE	DC 12V
BREAKAWAY TORQUE	3.5 kgf-m min. @ 12V
MINIMUM ENGAGEMENT VOLTAGE	7.5V @ AIR GAP 0.6mm REF
POWER CONSUMPTION	49 watts max.
BELT TYPE	A TYPE
MAXIMUM ALLOWABLE BELT TENSION	60 kgf per belt
PULLEY DIAMETER	125mm (4.9 in.)
CLUTCH TYPE	HEAVY DUTY

DO NOT SCALE

REV. LEVEL	RELEASED FOR PRODUCTION	DATE	07/16/98	BY	JKK	CHK	JKK	APPV	JKK
A	RELEASED FOR DESIGN VALIDATION	DATE	07/16/98	BY	JKK	CHK	JKK	APPV	JKK
A	RELEASED FOR PRODUCTION	DATE	07/16/98	BY	JKK	CHK	JKK	APPV	JKK
A	RELEASED FOR PRODUCTION	DATE	07/16/98	BY	JKK	CHK	JKK	APPV	JKK
A	RELEASED FOR PRODUCTION	DATE	07/16/98	BY	JKK	CHK	JKK	APPV	JKK

SANDEN
SANDEN INTERNATIONAL (U.S.A.), INC.
DRAWN BY: JKJ
SCALE REF: 1:1
PLOTTED BY: JKJ
SCALE REF: 1:1
METRIC

This drawing and the information contained herein are CONFIDENTIAL and PROPRIETARY to Sanden International (U.S.A.), Inc. and are loaned in CONFIDENCE and shall not be used, copied, or disclosed to others without the written permission of Sanden International (U.S.A.), Inc.

INTERPRETATION OF THIS DRAWING PER
ASME Y14.5M-1994

THIRD ANGLE PROJECTION
☉ ↗

MATERIAL: -

NAME: COMPRESSOR

DWG. NO.: 4706-6000

REV. C