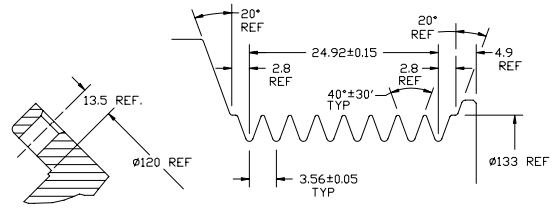


16 | 15 | 14 | 13 | 12 | 11 | 10 | 9 | 8 | 7 | 6 | 5 | 4 | 3 | 2 | 1

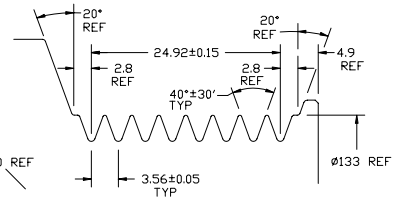
TERMINALS: PACKARD # 12124580



HOUSING: PACKARD # 12015792

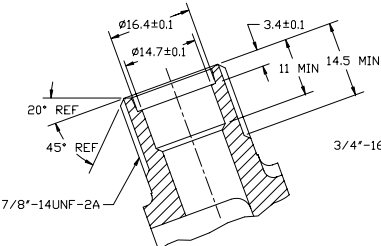


SECTION A-A



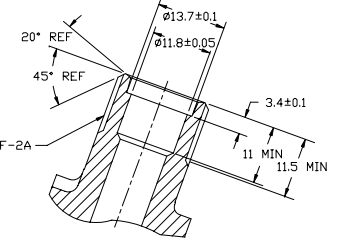
DETAIL C

SCALE: 3:1



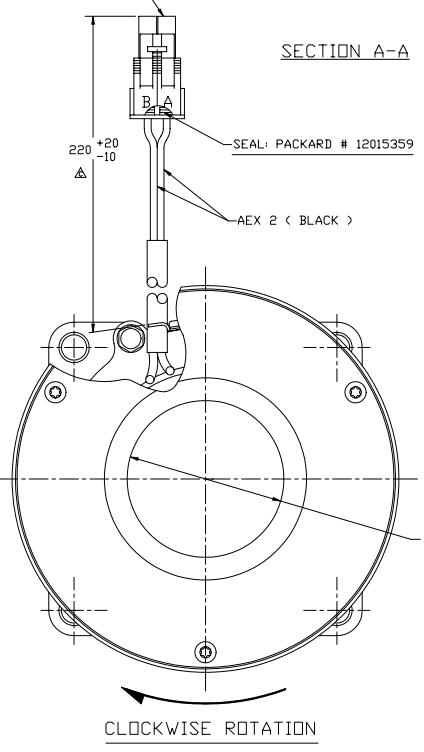
SECTION E-E

SCALE: 2:1  
(SECTION SHOWN WITH SEAL CAP REMOVED)

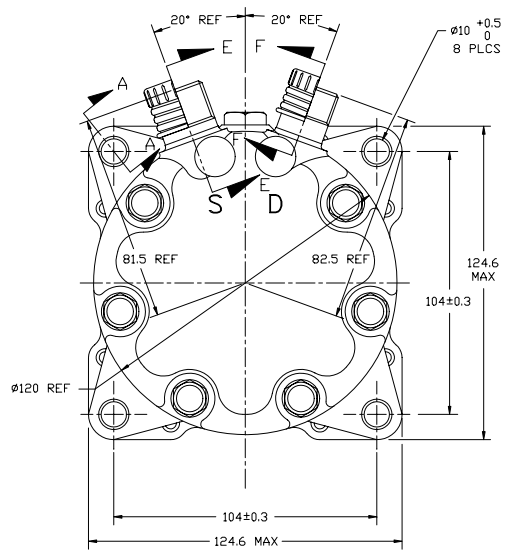
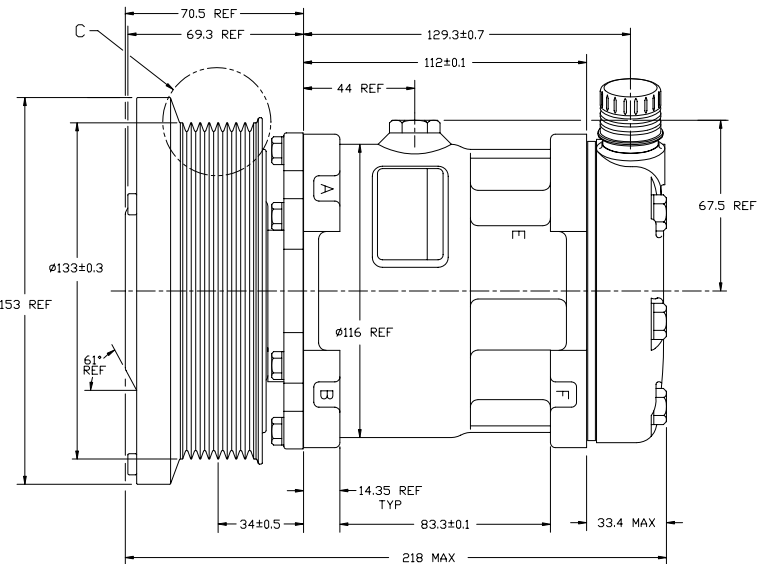


SECTION F-F

SCALE: 2:1  
(SECTION SHOWN WITH SEAL CAP REMOVED)



CLOCKWISE ROTATION



PCDN	REV	APPV DATE	REVISIONS	DWN	ESGN	CHK	APPV
	Δ		INITIAL RELEASE				
98133	Δ	4/22/98	ADDED WEIGHT AND CUSTOMER P/N	JY	ZY	ZYZ	SLJ
98614	Δ	6/19/98	200 WAS 20010.	JW	ZY	ZYZ	SLJ
2001340	Δ		DIL SP-15 WAS SP-20	JY			

COMPRESSOR SPECIFICATIONS

DISPLACEMENT PER REVOLUTION	154.9 cc / rev. ( 9.5cuin. / rev. )
MAXIMUM ALLOWABLE R.P.M.	4000 R.P.M.
MAXIMUM ALLOWABLE CONTINUOUS R.P.M.	4000 R.P.M.
REFRIGERANT	R134a
DIL ( SP-15 )	270 cc ( 9.3 fl.oz. )
WEIGHT	9.0 kg (19.7 lb.)
CUSTOMER P/N	9847944

CLUTCH SPECIFICATIONS

RATED VOLTAGE	DC 12V
BREAKAWAY TORQUE	3.5 kgF-m min. @ 12V
MINIMUM ENGAGEMENT VOLTAGE	7.5V @ AIR GAP 0.6mm REF
POWER CONSUMPTION	43 watts max.
BELT TYPE	PV8 TYPE
MAXIMUM ALLOWABLE BELT TENSION	120 kgf
PULLEY DIAMETER	Ø133mm ( 5.2 in. )
CLUTCH TYPE	SEALED HEAVY DUTY

REV. LEVEL	RELEASED FOR PRODUCTION	<p>SANDEN INTERNATIONAL (U.S.A.), INC.</p>
A	APPV. 2/13/98	
C	CHK. 3/4/98	<p>DRWN. 2/13/98</p> <p>SCALE REF 1:1</p> <p>PLTFRZ. 3/4/98</p> <p>SCALE REF 1:1</p> <p>METRIC</p>
<p>This drawing and the information contained herein are CONFIDENTIAL and PROPRIETARY to Sanden International (U.S.A.), Inc. and are loaned in CONFIDENCE and shall not be used, copied, or disclosed to others without the written permission of Sanden International (U.S.A.), Inc.</p>		
REV. LEVEL	RELEASED FOR DESIGN VALIDATION	<p>INTERPRETATION OF THIS DRAWING PER</p> <p>ASME Y14.5M-1994</p> <p>THIRD ANGLE PROJECTION</p> <p>SIZE D</p>
A	APPV. 2/13/98	
C	APPV. 3/4/98	
REV. LEVEL	RELEASED FOR PRODUCTION	MATERIAL
A	APPV. 2/13/98	
C	APPV. 3/4/98	
REV. LEVEL	RELEASED FOR PRODUCTION	NAME
A	APPV. 2/13/98	COMPRESSOR
C	APPV. 3/4/98	
REV. LEVEL	RELEASED FOR PRODUCTION	DWG. NO.
A	APPV. 2/13/98	4738-6000
C	APPV. 3/4/98	
		REV. D

DO NOT SCALE

16 | 15 | 14 | 13 | 12 | 11 | 10 | 9 | 8 | 7 | 6 | 5 | 4 | 3 | 2 | 1