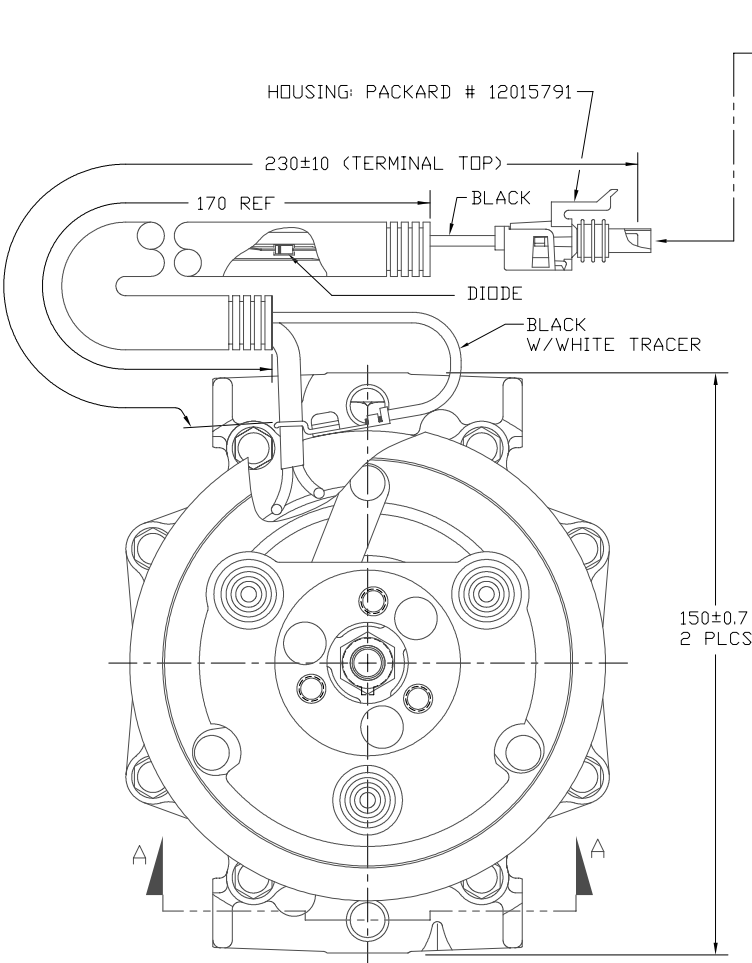
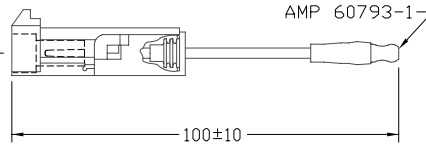


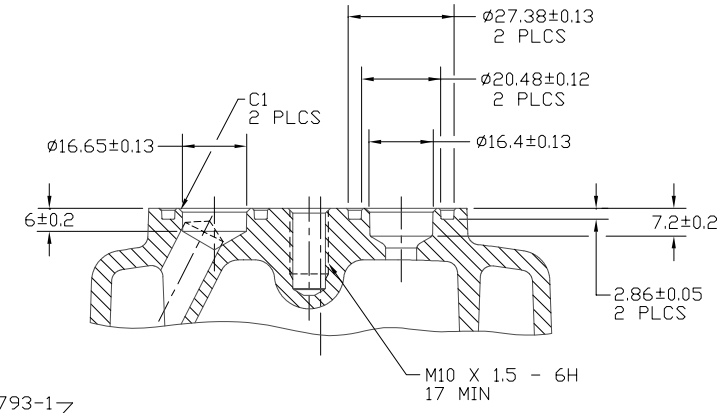
CIRCUIT DIAGRAM



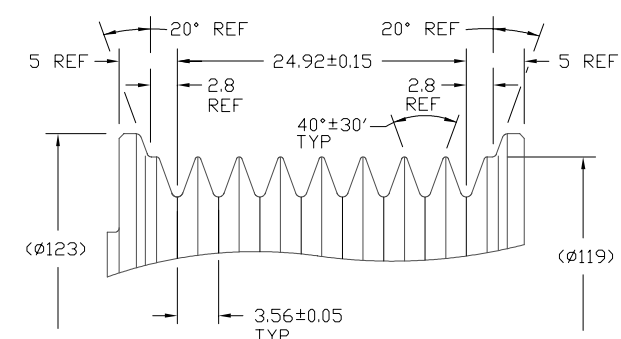
CLOCKWISE ROTATION



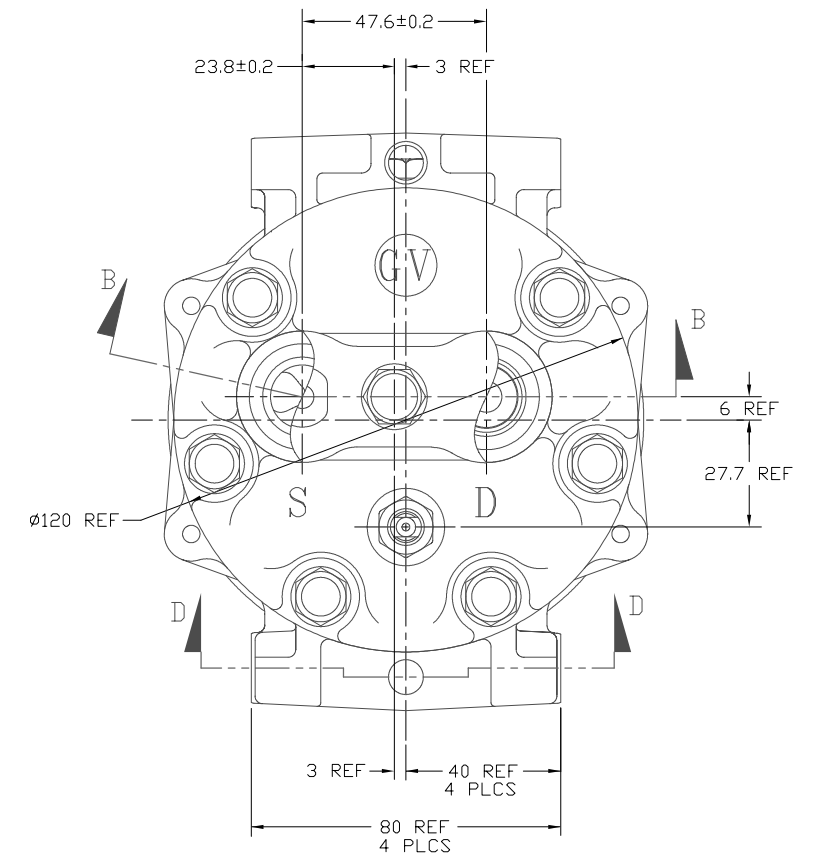
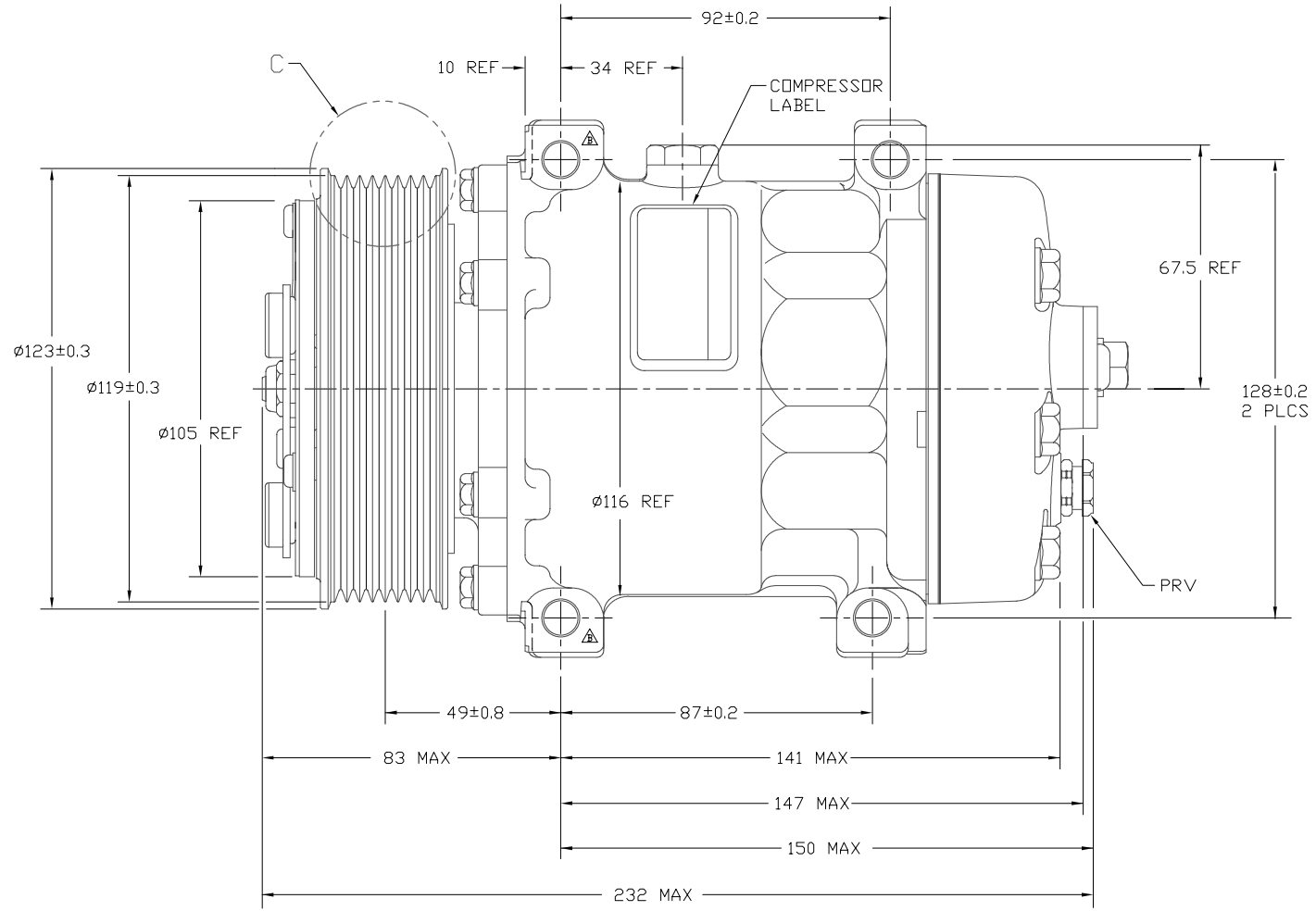
ASSEMBLED COMPRESSORS TO HAVE CONNECTORS ENGAGED



SECTION B-B
(SECTION WITH O-RINGS, SHIPPING PAD ASSEMBLY, AND BOLT REMOVED)



DETAIL C
SCALE 3:1

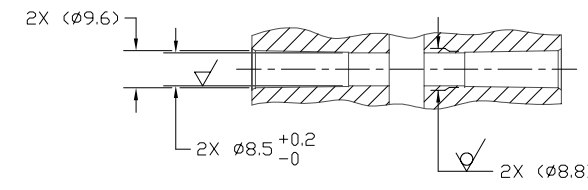


COMPRESSOR SPECIFICATIONS (REF)

DISPLACEMENT PER REVOLUTION	154.9 cc / rev. (9.5cu.in. / rev.)
MAXIMUM ALLOWABLE R.P.M.	8000 R.P.M.
MAXIMUM ALLOWABLE CONTINUOUS R.P.M.	6000 R.P.M.
REFRIGERANT	R134a
OIL (SP-15)	300 cc (10.1 fl.oz.)

CLUTCH SPECIFICATIONS (REF)

RATED VOLTAGE	DC 12V
BREAKAWAY TORQUE	3.5 kgf-m min. @ 12V
MINIMUM ENGAGEMENT VOLTAGE	7.5V @ AIR GAP 0.6mm
POWER CONSUMPTION	49 watts max.
BELT TYPE	PV8 TYPE
MAXIMUM ALLOWABLE BELT TENSION	120 kgf
PULLEY DIAMETER	$\phi 119$ mm (4.69 in.)
CLUTCH TYPE	HEAVY DUTY



SECTION D-D
4 PLACES

DO NOT SCALE

REV. LEVEL	REV.	APPV. DATE	REVISIONS	DWN	DSGN	CHK	APPV.
			INITIAL ISSUE				
2006231		3/20/06	DELETED SECTION B-B REMOVED COUNTERBORE FROM BOTH FRONT MOUNTING BOSSES SECTION A-A, 4 PLACES WAS SECTION A-A, 2 PLACES CHANGED DRAWING TITLE TO COMPRESSOR, SD7H15, ENHANCED CAPACITY	RSR	SN	DRL	NB

REV. LEVEL	RELEASED FOR: ENGR. DEVELOPMENT	<p>SANDEN INTERNATIONAL (U.S.A.), INC.</p>
DSGN	Shiba Nagera 2/23/06	
DWN	J Sokolowski	SCALE REF 1:1 PLOTTED SCALE REF 1:1 METRIC
CHK	Dennis Lee 2/23/06	<p>This drawing and the information contained hereon are CONFIDENTIAL and PROPRIETARY to Sanden International (U.S.A.), Inc. and shall not be used, copied, or disclosed to others without the written permission of Sanden International (U.S.A.), Inc.</p>
APPV.	NB	
DATE	2/24/06	INTERPRETATION OF THIS DRAWING PER ASME Y14.5M-1994
REV. LEVEL	RELEASED FOR: DESIGN VALIDATION	THIRD ANGLE PROJECTION
DSGN	Shiba Nagera 3/20/06	SIZE D
APPV.	NB	
DATE	3/20/06	
REV. LEVEL	RELEASED FOR: PRODUCTION VAL'D.	MATERIAL:
DSGN	Shiba Nagera 3/20/06	
APPV.	NB	
DATE	3/20/06	
REV. LEVEL	RELEASED FOR: PRODUCTION	NAME
DSGN		COMPRESSOR, SD7H15 ENHANCED CAPACITY
APPV.		DWG. NO. 4800-6000
DATE		REV. B