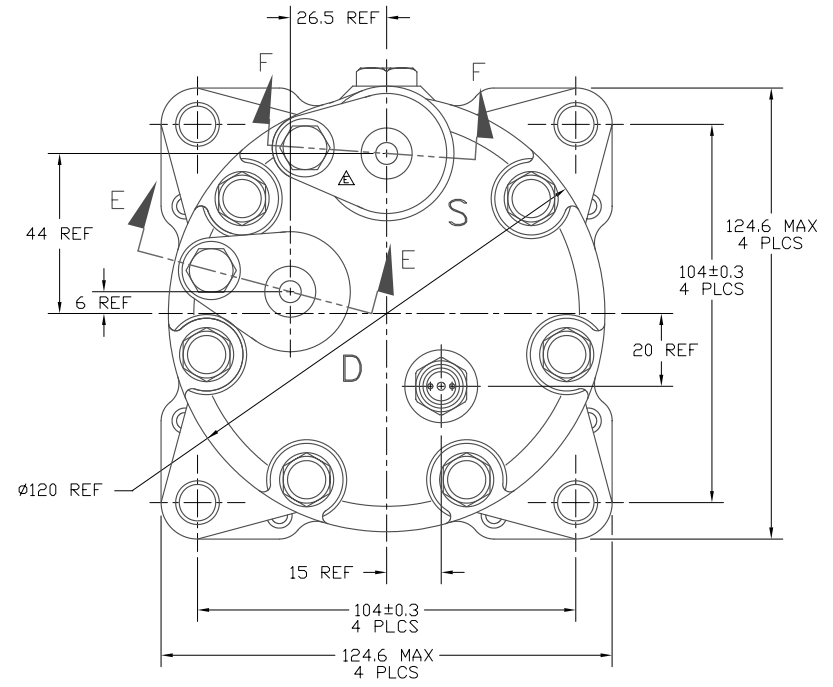
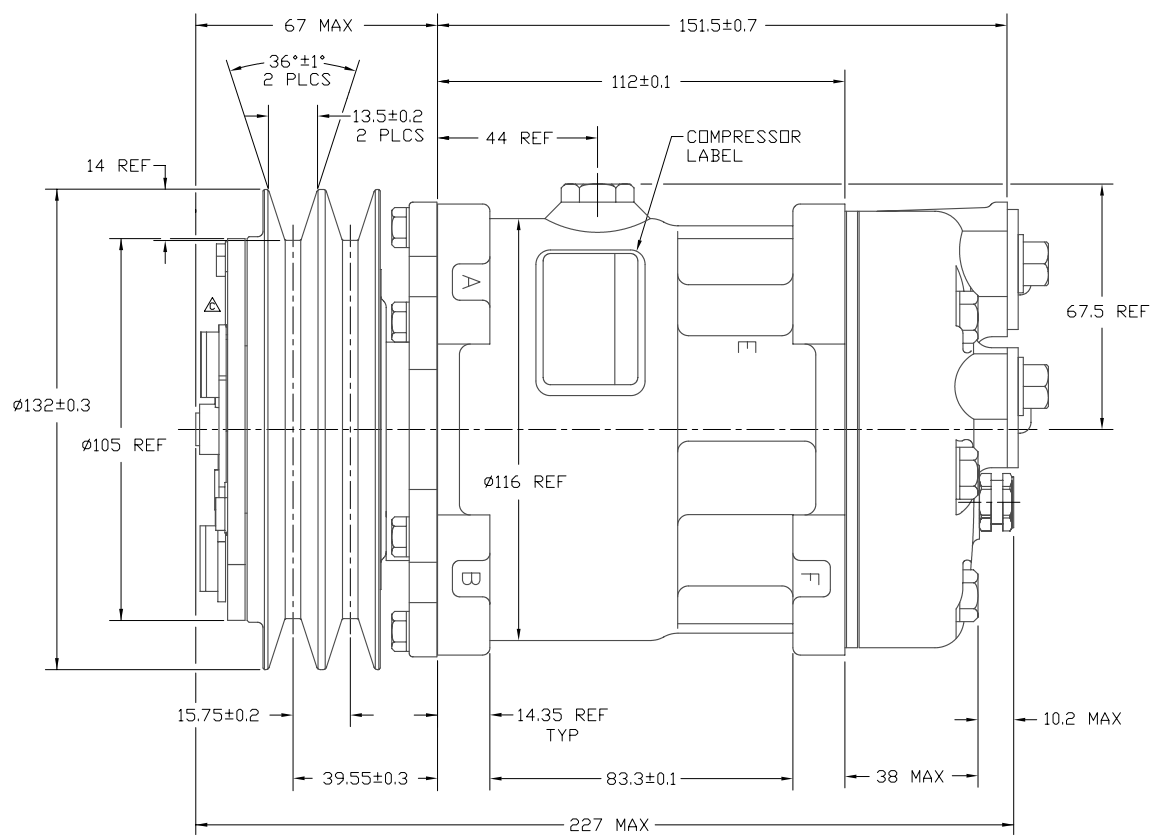
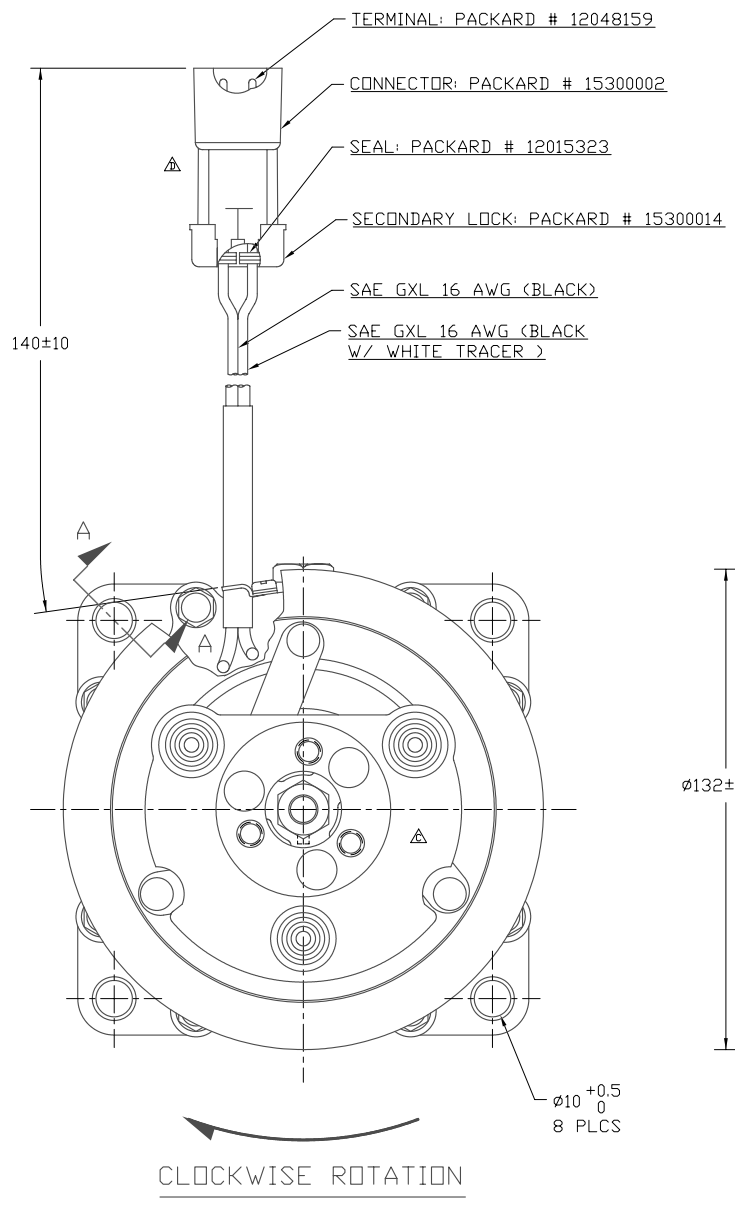
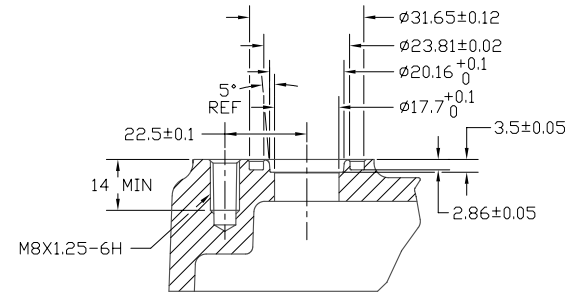
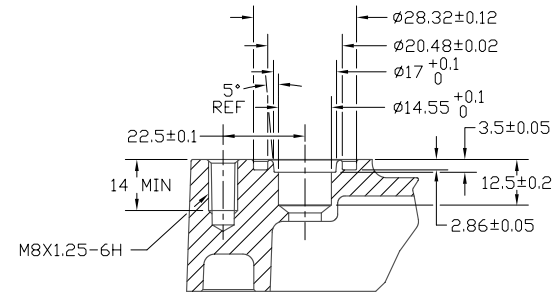
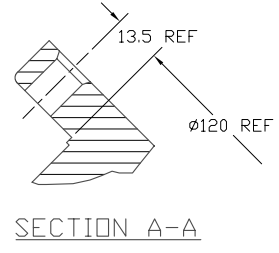
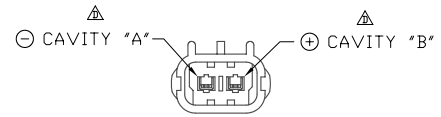


PCDN	REV	APPV DATE	REVISIONS	DWN	DSGN	CHK	APPV
			INITIAL ISSUE				
2001340		11/16/01	OIL (SP-15) WAS OIL (SP-20)	RSR	LK	DRL	MY
2002193		7/30/02	ARMATURE 6574-6030 WAS 6732-6030	JS	DS	DRL	NB
2004105		08/27/04	CHANGED WIRE CAVITY - BLACK WITH WHITE TRACER WIRE TO CAVITY "B" AND BLACK WIRE TO CAVITY "A". ADDED CAVITY "A", CAVITY "B"	RSR	HF	DRL	RG
2005188		09/15/05	CHANGED SUCTION PORT SHIPPING PLATE FROM 8003-6330 TO 8003-6340	RSR	NB	DRL	NB



COMPRESSOR SPECIFICATIONS

DISPLACEMENT PER REVOLUTION	154.9 cc / rev. (9.5cu.in. / rev.)
MAXIMUM ALLOWABLE R.P.M.	8000 R.P.M.
MAXIMUM ALLOWABLE CONTINUOUS R.P.M.	6000 R.P.M.
REFRIGERANT	R134a
OIL (SP-15)	300 cc (10.1 fl.oz.)
WEIGHT	7.4 kg (16.4 lb.)

CLUTCH SPECIFICATIONS

RATED VOLTAGE	DC 12V
BREAKAWAY TORQUE	3.5 kgf-m min. @ 12V
MINIMUM ENGAGEMENT VOLTAGE	7.5V @ AIR GAP 0.6mm REF
POWER CONSUMPTION	49 watts max.
BELT TYPE	A TYPE
MAXIMUM ALLOWABLE BELT TENSION	60 kgf per belt
PULLEY DIAMETER	Ø132mm (5.2 in.)
CLUTCH TYPE	HEAVY DUTY

DO NOT SCALE

REV. LEVEL: A DSN: C. Cozart APPV: D. Seals DATE: 03/29/01	DRAWN: R. Rodriguez CHECKED: Dennis Lee SCALE REF: 1:1 PLOTTED SCALE REF: 1:1 METRIC
INTERPRETATION OF THIS DRAWING PER ASME Y14.5M-1994 THIRD ANGLE PROJECTION 	
NAME: COMPRESSOR DWG. NO.: 4893-6000 REV: E	