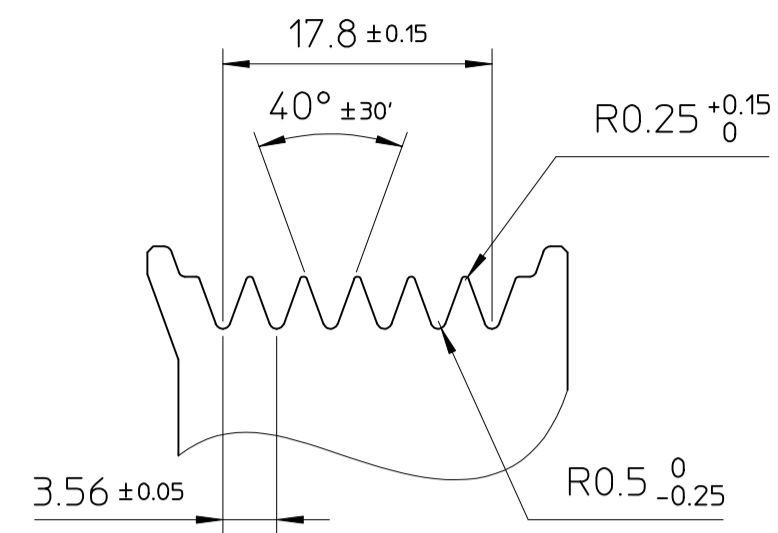
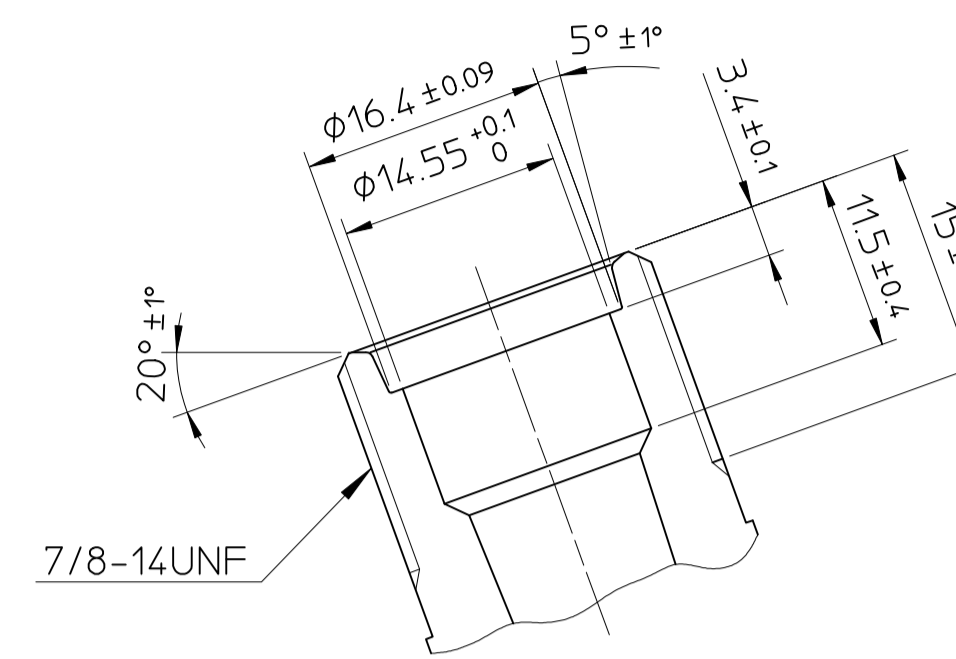


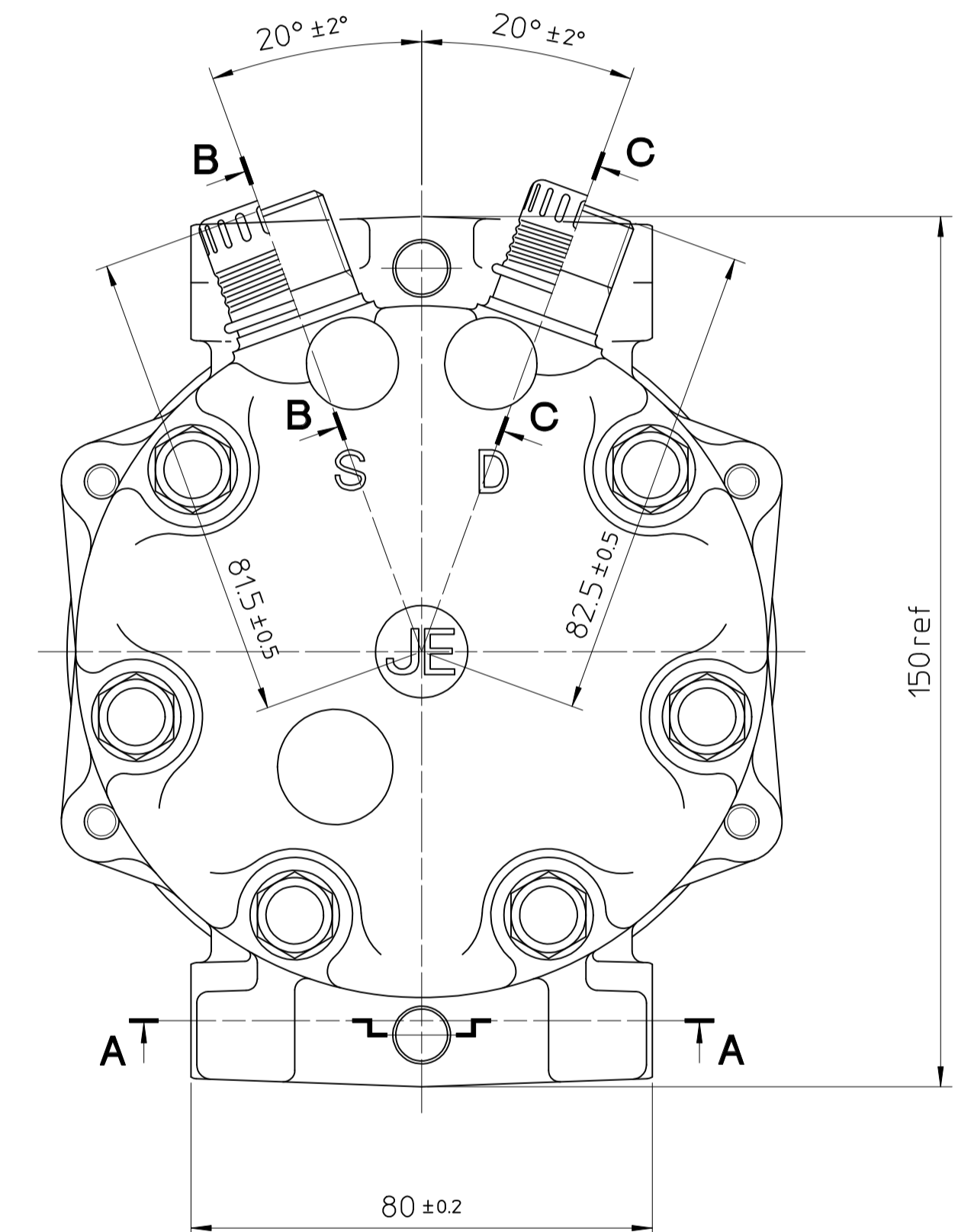
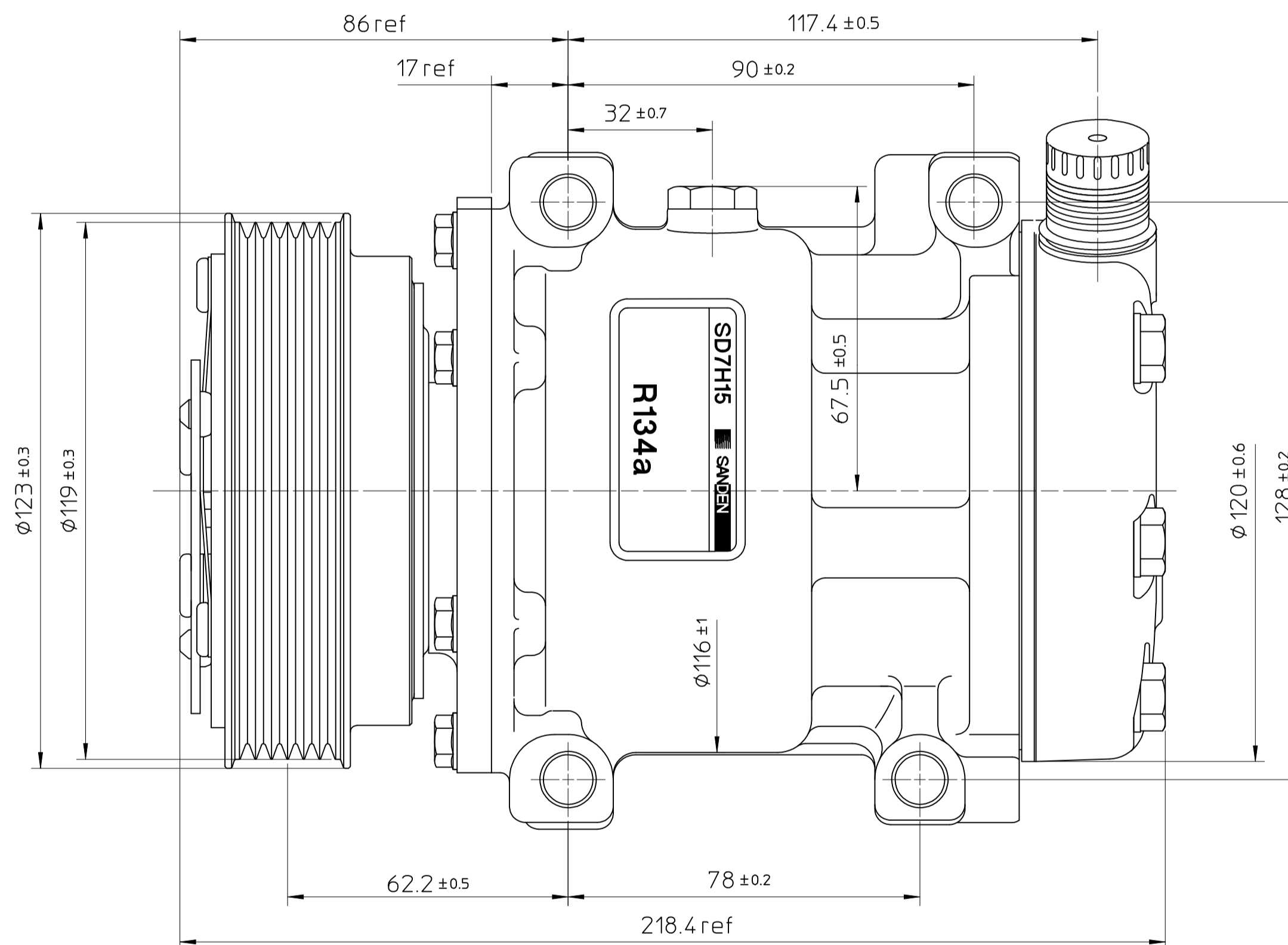
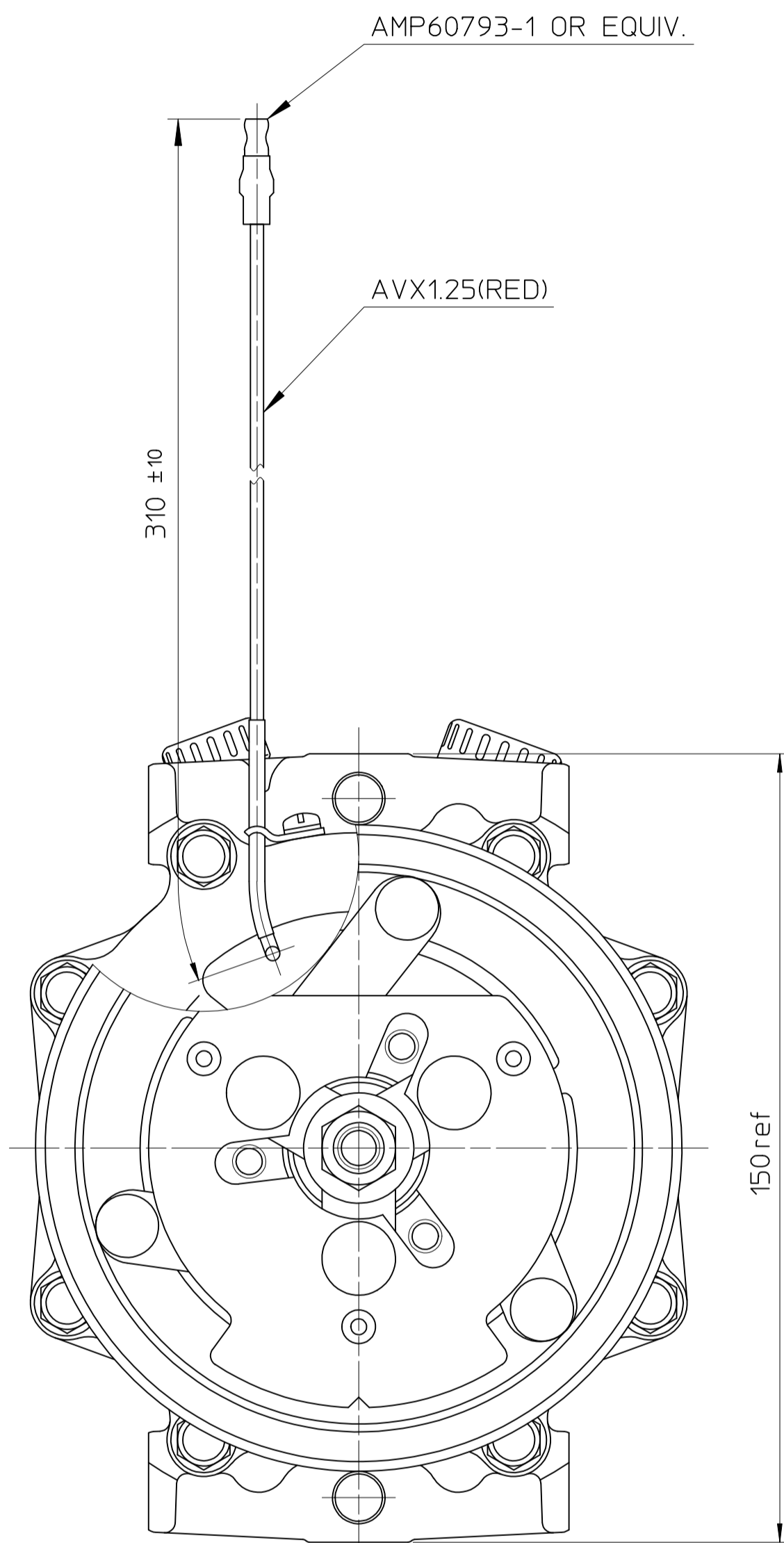
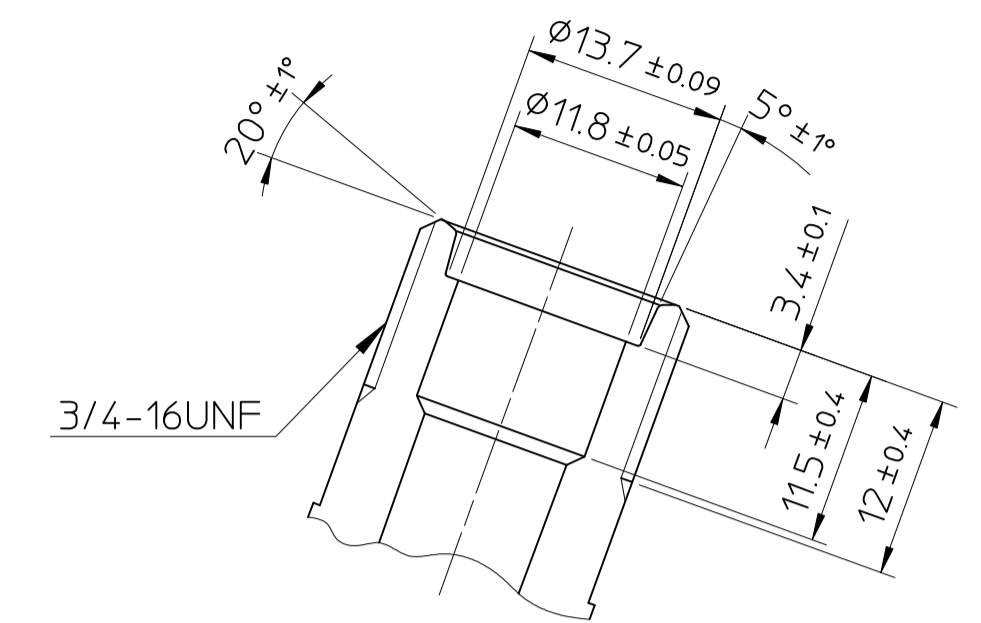
**DETAIL OF ROTOR GROOVE (2:1)**



**PARTIAL SECT. B-B (2:1)**



**PARTIAL SECT. C-C (2:1)**



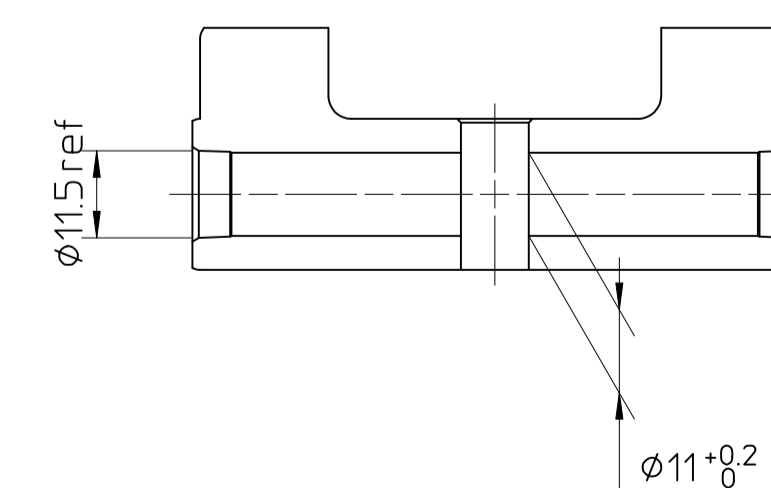
**COMPRESSOR SPECIFICATIONS**

BORE	φ29.3 mm
STROKE	32.8 mm
NUMBER OF CYLINDERS	7
DISPLACEMENT PER REVOLUTION	154.9 cc/rev.
MAXIMUM ALLOWABLE CONTINUOUS SPEED	4000 r.p.m.
MAXIMUM DOWNSHIFT SPEED	6000 r.p.m.
REFRIGERANT	R-134a
OIL	SP-20 OR EQUIV.
OIL CHARGE	240 cc
ROTATION	CLOCKWISE
WEIGHT	7.2 kg

**CLUTCH SPECIFICATIONS**

RATED VOLTAGE	DC 12 V
MINIMUM BREAKAWAY TORQUE	3.5 kg·m
MINIMUM ENGAGEMENT VOLTAGE	7.5 V
MAXIMUM POWER CONSUMPTION	49 W
MAXIMUM ALLOWABLE CONTINUOUS SPEED	4000 r.p.m.
MAXIMUM DOWNSHIFT SPEED	6000 r.p.m.
BELT TYPE	PV TYPE
PULLEY DIAMETER	φ119 mm
WEIGHT	kg

**PARTIAL SECT. A-A**



NO.	REVISION RECORD	BY	DATE	MATERIAL	PART NO.	NAME	COMPRESSOR
				THIRD ANGLE PROJECTION	SCALE 1:1		
				DESIGNED BY H.Akuzawa	DATE 26 Nov 1999	MODEL	SD7H15JE8105
				CHECKED BY Y.Uchiyama	DATE 26 Nov 1999	DRAWING NO.	8105 - 6000
				APPROVED BY H.Chiyoda	DATE 26 Nov 1999		